



Click a section heading or graphic for chapter topic lists. Click [Show All Topics](#) for an expanded list of all topics.



### **Introduction/Getting Started**

Finding your way around InControl Tools;  
Guide to the program's basic features.



### **The Display ToolPanel**

Select or customize monitor configurations;  
create a virtual desktop; adjust color.



### **The Desktop ToolPanel**

Change or adjust desktop resources,  
including icon font and logical dpi.



### **The Hot Keys ToolPanel**

Assign a popup menu and common  
tasks to Hot Keys or mouse buttons.



### **The Audio ToolPanel**

Open and play Wave and MIDI files;  
set volume levels for all audio devices.



### **The Video ToolPanel**

Enjoy full-motion video file playback;  
Adjust playback for peak performance and quality.



### **The Power Management ToolPanel**

Set up your display's power saving features;  
Configure your screen saver.



### **InControl Menus**

Control desktop/display attributes and many  
other dynamic features on-the-fly.



### **Solutions/Tech Support**

Common questions and answers;  
How to file a Problem Report.

**Show All Topics**



Click the [Contents](#) button above for a retracted contents list.

---

## Introduction/Getting Started

- ◆ [Introducing InControl Tools](#)
- ◆ [How to Contact Us](#)
- ◆ [Quick Start](#)
- ◆ [Navigating InControl Tools](#)
- ◆ [Option Buttons](#)
- ◆ [Command Buttons](#)
- ◆ [InControl Menus](#)
- ◆ [Controlling Dynamic Features](#)
- ◆ [Using PopHelp](#)

---

## The Display ToolPanel

- ◆ [The Display ToolPanel](#)
- ◆ [Choosing a Monitor Configuration](#)
- ◆ [Configuring Your Display](#)
- ◆ [Assemble a Custom Display Mode](#)
- ◆ [Changing Color Depth](#)
- ◆ [Correcting Your Monitor's Color](#)
- ◆ [Adjusting Your Display's Brightness](#)
- ◆ [Adjusting Your Display's Contrast](#)
- ◆ [Adjusting Your Display's Gamma](#)

---

## The Desktop ToolPanel

- ◆ [The Desktop ToolPanel](#)
- ◆ [Changing Your Icon Caption](#)
- ◆ [Changing the Size of Your Cursor](#)
- ◆ [Changing the Color of Your Cursor](#)
- ◆ [Adjusting Resource Resolution](#)
- ◆ [Changing Resource Size](#)

---

## The Hot Keys ToolPanel

- ◆ [The Hot Keys ToolPanel](#)
- ◆ [Adding Hot Key Assignments](#)
- ◆ [Assigning the InControl Popup Menu to a Hot Key](#)
- ◆ [Using the InControl Popup Menu](#)
- ◆ [Disabling the InControl Popup Menu Assignment](#)
- ◆ [Assigning Hot Keys to Run Other Programs](#)
- ◆ [Temporarily Disabling Hot Keys](#)
- ◆ [Removing Hot Key Assignments](#)

---

## The Audio ToolPanel\*

- ◆ [The Audio ToolPanel](#)
- ◆ [Opening and Playing Wave or MIDI files](#)

◆ [Adjusting Audio Levels and Settings](#)

\*Note: This feature is not supported on all display cards. Where unsupported, the Audio ToolPanel options button is grayed out on all ToolPanels.

---

## The Video ToolPanel\*

◆ [The Video ToolPanel](#)

◆ [Playing a Full-Motion Video File](#)

◆ [Video Playback Adjustments](#)

\*Note: This feature is not supported on all display cards. Where unsupported, the Video ToolPanel options button is grayed out on all ToolPanels.

---

## The Power Management ToolPanel

◆ [The Power Management ToolPanel](#)

◆ [Managing Your Display's Power Consumption](#)

◆ [Changing or Adjusting Your Screen Saver](#)

◆ [Testing Your Screen Saver](#)

◆ [Changing the Screen Saver Delay](#)

◆ [Viewing or Changing Your Screen Saver Options](#)

◆ [Disabling the Screen Saver](#)

---

## InControl Menus

◆ [InControl Menus Overview](#)

◆ [Using the InControl Desktop Menu](#)

◆ [Using the InControl Popup Menu](#)

◆ [Controlling Dynamic Features](#)

◆ [Customizing the Desktop for an Application](#)

---

## Solutions/Tech Support

◆ [Solutions](#)

◆ [Filing a Tech Support Report](#)

◆ [How to Contact Us](#)

## **Introduction/Getting Started**

- ◆ [Introducing InControl Tools](#)
- ◆ [How to Contact Us](#)
- ◆ [Quick Start](#)
- ◆ [Navigating InControl Tools](#)
- ◆ [Option Buttons](#)
- ◆ [Command Buttons](#)
- ◆ [InControl Menus](#)
- ◆ [Controlling Dynamic Features](#)
- ◆ [Using PopHelp](#)

## The Display ToolPanel

- ◆ **The Display ToolPanel**
- ◆ Choosing a Monitor Configuration
- ◆ Configuring Your Display
- ◆ Assemble a Custom Display Mode
- ◆ Changing Color Depth
- ◆ Correcting Your Monitor's Color
- ◆ Adjusting Your Display's Brightness
- ◆ Adjusting Your Display's Contrast
- ◆ Adjusting Your Display's Gamma

## The Desktop ToolPanel

- ◆ **The Desktop ToolPanel**
- ◆ Changing Your Icon Caption
- ◆ Changing the Size of Your Cursor
- ◆ Changing the Color of Your Cursor
- ◆ Adjusting Resource Resolution
- ◆ Changing Resource Size

## The Hot Keys ToolPanel

- ◆ **The Hot Keys ToolPanel**
- ◆ Adding Hot Key Assignments
- ◆ Assigning the InControl Popup Menu to a Hot Key
- ◆ Using the InControl Popup Menu
- ◆ Disabling the InControl Popup Menu Assignment
- ◆ Assigning Hot Keys to Run Other Programs
- ◆ Temporarily Disabling Hot Keys
- ◆ Removing Hot Key Assignments

## The Audio ToolPanel\*

- ◆ [The Audio ToolPanel](#)
- ◆ [Opening and Playing Wave or MIDI files](#)
- ◆ [Adjusting Audio Levels and Settings](#)

\***Note:** This feature is not supported on all display cards. Where unsupported, the Audio ToolPanel options button is grayed out on all ToolPanels.



## The Video ToolPanel\*

- ◆ [The Video ToolPanel](#)
- ◆ [Playing a Full-Motion Video File](#)
- ◆ [Video Playback Adjustments](#)

\***Note:** This feature is not supported on all display cards. Where unsupported, the Video ToolPanel options button is grayed out on all ToolPanels.

## The Power Management ToolPanel

- ◆ **The Power Management ToolPanel**
- ◆ Managing Your Display's Power Consumption
- ◆ Changing or Adjusting Your Screen Saver
- ◆ Testing Your Screen Saver
- ◆ Changing the Screen Saver Delay
- ◆ Viewing or Changing Your Screen Saver Options
- ◆ Disabling the Screen Saver

## Desktop/Popup Menus

- ◆ [InControl Menu Overview](#)
- ◆ [Using the InControl Desktop Menu](#)
- ◆ [Using the InControl Popup Menu](#)
- ◆ [Controlling Dynamic Features](#)
- ◆ [Customizing the Desktop for an Application](#)

## **Solutions/Tech Support**

- ◆ [Solutions](#)
- ◆ [Filing a Tech Support Report](#)
- ◆ [How to Contact Us](#)



InControl Tools is a set of utilities that you will come to rely on--as we have at Diamond--for a variety of daily configuration, adjustment and Windows management needs.

InControl brings together a host of indispensable display and desktop utilities that will help you create and maintain a picture perfect environment for work or pleasure.

With InControl you can:

- ◆ Quickly set up your monitor for maximum productivity and performance.
  - ◆ Define custom monitor modes.
  - ◆ Pan and zoom on a customized virtual desktop.
  - ◆ Control color depth.
  - ◆ Switch screen resolutions, modify your virtual desktop, control audio volume, create application associations and change other dynamic features on-the-fly from a special popup menu.
  - ◆ Fine-tune your display's color\* using brightness, contrast and gamma controls.
  - ◆ Tweak your display's aspect ratio.
  - ◆ Modify icon fonts, desktop resources, and cursor size and color\*.
  - ◆ Play Wave and MIDI audio files and adjust channel and volume settings for any audio output--including CD audio, microphone or any other device connected to your audio port.
  - ◆ Enjoy full-motion video playback\*\* and make adjustments during playback to determine peak quality/performance level.
  - ◆ Assign Hot Keys and mouse buttons to provide instantaneous access to routine tasks, run other Windows programs and access special InControl functions.
  - ◆ Manage your display's power consumption\*\*\* and modify Windows' screen saver settings.
- It is all here in one friendly, easy-to-use, easy-to-access package that is designed to meet your most pressing personal and professional needs every time you turn on your computer.

Enjoy. And do not forget to let us know what you think.

---

\* Color adjustment features not available to all monitors and display adapters.

\*\* Not available on all display cards and system configurations. When unsupported by required hardware, the Audio and/or Video ToolPanel options buttons are disabled on all ToolPanels.

\*\* For monitors and display adapters with Display Power Management System (DPMS) capability.



We would like to hear what you think about InControl Tools. Pass along any comments or suggestions to our main office or to any of the online services listed below.

If you run into any problems, you can also use these addresses to pass along a copy of your current system information as generated by the Problem Report dialog. For more on how that report is generated and used, see [Filing a Problem Report](#).

---

#### **Main Office**

**InControl Tools  
c/o Diamond Multimedia Systems, Inc.  
2880 Junction Avenue  
San Jose, CA 95134-1922 USA  
TEL 408-325-7000  
FAX 408-325-7070**

---

#### **Tech Support Hotline**

**TEL 408-325-7100  
FAX 408-325-7171  
Hours: Monday through Friday 6am-7pm Pacific; Saturday 8am-4pm Pacific.  
Automated help available 24 hours.**

---

#### **Diamond BBS**

Use this 24-hour system to send text files with your comments, suggestions, questions or product inquiries. If requested by Diamond Technical Support, you can also use the BBS to send [Problem Description Reports](#). Always be sure to include your name, address, phone number(s), and the best times to reach you.

**408-325-7175 (9600+ baud)  
408-325-7080 (2400 baud)  
Settings: N,8,1  
Services: Product information, updates, uploads.**

#### **To upload a file to Diamond Technical Support:**

- 1 Log on as "new".
- 2 Complete any requested registration information. After registration, the main menu appears.
- 3 Type "F" to go to the File Libraries area. (Note: do not type the quote marks shown in these instructions; type only the letters or phrases between the quotes.)
- 4 Type "S" to select a library.
- 5 Type "U" to go to the Upload library.
- 6 Type "upload" to notify the system of your upload request. You are asked for the file name and a

protocol preference. After that, press Return. The BBS switches to its receive mode and awaits receipt of the file.

- 7 When the upload is complete, type "X" to exit the File Libraries area, then "X" again to exit the BBS.

On subsequent calls you can log on with the ID and password provided during your first visit.

---

### **The Diamond FAX-On-Demand Service**

**1-800-380-0300**

Use this toll-free number to receive data sheets, prices and distribution information for any Diamond Multimedia Systems product. The documents are sent immediately to your FAX machine. Complete instructions are provided online.

---

### **CompuServe**

Type

**GO DMNDONLINE**

at any ! prompt.

---

### **America OnLine**

Search under the keyword **DIAMOND**.

Forum category: Industry Connection.

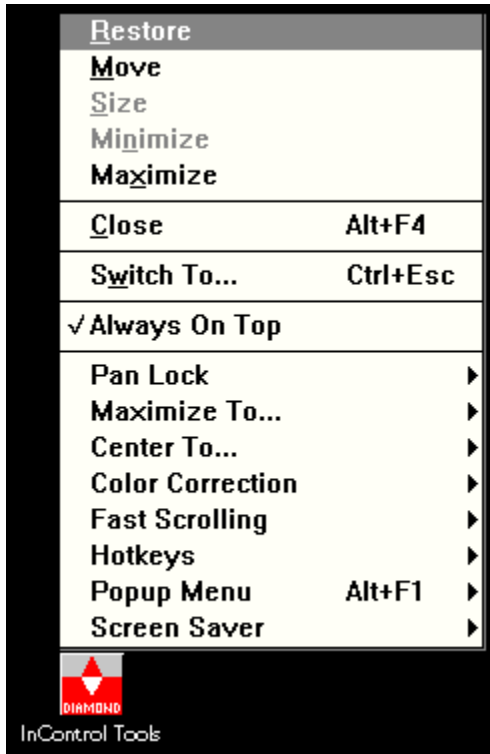


InControl Tools is installed as a regular desktop feature of Windows.

It runs automatically whenever Windows starts, requiring only a small fraction (less than 1 percent) of your overall resources in its standby iconized state.

In addition to providing quick access to InControl's main window (see below), the program's desktop icon allows you to switch several of the program's dynamic features on or off.

Click on the picture below for item descriptions.

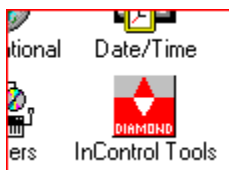


**To open InControl Tools' main window, either**

- ◆ Double-click the InControl Tools icon on your Windows desktop; or,
- ◆ Click the icon to raise its menu, then select Restore or Maximize.

**InControl is also in Control**

The program can also be called from Windows' Control Panel (it is also automatically installed there). Just open Control Panel and double-click the Diamond icon.





## **The main window**

InControl Tools is made up of six ToolPanels and several dialogs, each of which offers controls for a different type of task.

The main window offers one ToolPanel at a time, though you can switch back and forth among ToolPanels by clicking the Option buttons that appear on the left side of all ToolPanels.

When you first run InControl Tools, the Display ToolPanel appears in the main window. This ToolPanel allows you to address the main order of business--choosing a monitor configuration--before doing anything else.

When you are through making all changes in all ToolPanels and dialogs, click the OK button to dismiss the main window.

For more information on the main window, see [Navigating InControl Tools](#).

## **Closing remarks**

To dismiss InControl Tools main window, you can click either OK (to enact any changes made) or Cancel (to abandon changes) on any ToolPanel.

To exit InControl Tools, choose Close from the desktop icon menu.

**Important:** If you close InControl Tools from the desktop icon menu, you will also turn off InControl's Hot Keys, screen-switching and other "dynamic" capabilities. For more information on the effects of such a shutdown, see [Solutions](#).

## **Next: [Navigating InControl Tools](#)**



All InControl ToolPanels are divided into three main sections:

- ◆ A set of Options buttons (left side of all ToolPanels). Use these buttons to switch to any other ToolPanel any time.
- ◆ A ToolPanel (middle section). This area contains the controls you use to make your changes and adjustments. Each ToolPanel has its own toolset.
- ◆ A set of command buttons (right side of all ToolPanels). These buttons let you save changes, cancel changes, get help for a specific ToolPanel or check your program version.  
Several dialog boxes--that let you do everything from create a user-defined display configuration to correct your display's color--are also available from various points in the program.

#### **After the inaugural**

Whenever you click OK or Cancel to dismiss the main window, InControl remembers where you left off and opens to that ToolPanel the next time you open the main window.



Use the Options button set on the left side of any InControl Tools ToolPanel to quickly switch to any other ToolPanel.

You can switch ToolPanels any time. Until you click OK (that accepts all changes made and dismisses the main window), you can continue to make adjustments and test configurations in any area of the program.

The chart below lists the Options buttons and describes the ToolPanels called by each. To jump to the main topic (that includes a diagram) for a ToolPanel, click its button.

**Option buttons and their functions:**

---



Switches you to the Display ToolPanel, that allows you to fine-tune your display for maximum performance and productivity. Use this ToolPanel to select a standard monitor mode, create a list of custom monitor modes, choose Desktop and Viewport\* sizes from among those available to your monitor, set up a virtual desktop, select a color depth, and adjust color settings for your display.

---



Switches you to the Desktop ToolPanel, that allows you to make adjustments to icon captions and other Windows resources. Such changes may be required after switching screen sizes in order to provide a more aesthetically pleasing or practical match of resources and resolution.

---



Switches you to the Hot Keys ToolPanel. The Hot Keys ToolPanel allows you to dedicate up to 16 keyboard combinations, mouse button or keyboard/button assignments for easy program-launching and quick access to InControl Tools features and other Windows tasks.

---



Switches you to the Audio ToolPanel, that allows you to open and play Wave and MIDI files and provides you with the means to directly control volume, balance and channel selection for your audio devices.

**Note:** This feature is not supported on all systems. Where unsupported, the Audio ToolPanel options button is grayed out on all ToolPanels.

---



Switches you to the Video ToolPanel, that provides a testing board for the playback of full-motion video files. Use this ToolPanel to choose an \*.AVI file and fine-tune playback for peak performance and quality.

**Note:** This feature is not supported on all display cards. Where unsupported, the Video ToolPanel options button is grayed out on all ToolPanels.

---



Switches you to the Power Management ToolPanel, that allows you to manage your monitor's power-saving features and provides an easy way to coordinate these features with your Windows screen savers.

---





**Note:** Some display cards do not support Viewport size changes, and thus do not support the creation of virtual desktops. When that condition exists, the Viewport Size list is disabled on the Display ToolPanel and all associated options--including Zoom options--are unavailable.



On the right side of each ToolPanel is a set of four command buttons. Except for the Help button, the functionality of these buttons is the same on all ToolPanels.

**Command buttons and their functions:**

---

	Dismisses the main window and enacts all changes made in all ToolPanels and dialogs during this session of InControl Tools.
	Abandons all changes made in all ToolPanels and dialogs during this session of InControl Tools and dismisses the main window.
	Opens InControl Tools Help (this file) and shows the main topic for the current ToolPanel.
	Displays the InControl Tools About box, that contains version information about the program.

---



InControl Tools contains two menus--both of which offer quick access to commonly used features and functions without the need to open the main ToolPanel window.

The primary menu, the Desktop Menu, is available anytime by single-clicking the InControl icon on your desktop. This menu provides two types of functions:

- ◆ Positioning functions: A pair of switches let you choose between Desktop or Viewport for dialog box centering and when maximizing windows.

- ◆ On/off switching capability for seven InControl features: Screen Saver, Pan Lock, Color Correction, Fast Scrolling, Hot Keys and the Popup Menu, plus a switch that allows you to keep the desktop icon on top of all other windows.

The second InControl menu is the Popup Menu, that, upon installation, can be called anytime from any point in Windows by clicking your right mouse button.

The Popup Menu offers instant access to a variety of InControl Tools "dynamic" features, including zooms, Desktop and Viewport mode switching, audio volume control and the capability to assign the current desktop configuration to a currently running application.

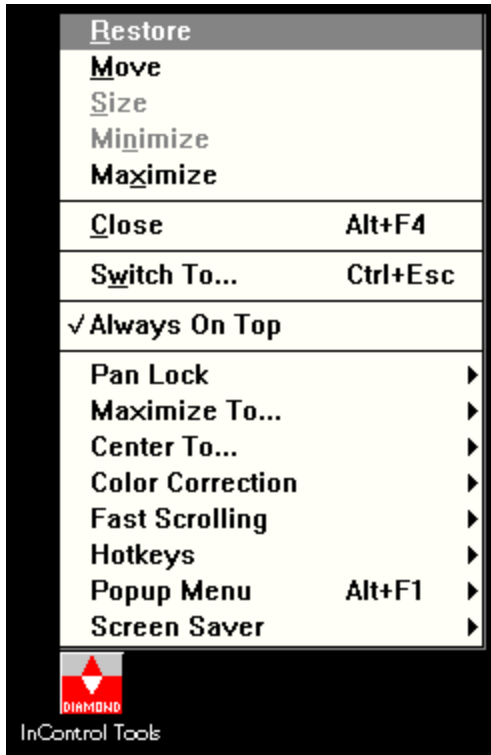
The button or Hot Key assignment that activates the Popup Menu can be changed any time from the Hot Keys ToolPanel, and the menu can be switched on or off any time from the Hot Keys ToolPanel, the Desktop Menu, or from the Popup Menu itself.

For itemized descriptions of the two menus, see [Using the InControl Desktop Menu](#) and [Using the InControl Popup Menu](#).



This menu, that can be accessed any time by single-clicking the InControl icon on your desktop, allows you to modify many of InControl Tools' "dynamic" features.

For descriptions of the menu items, click on the picture below.

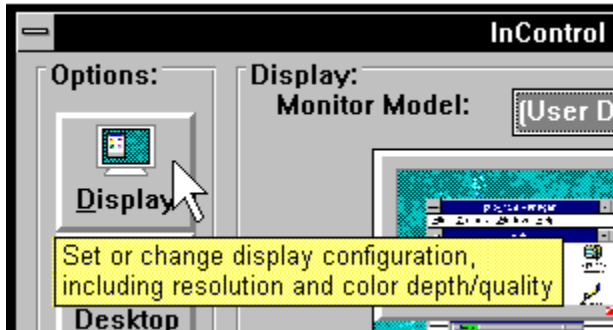


**Also see: [Controlling Dynamic Features](#); [Using the InControl Popup Menu](#)**



You can get on-the-spot answers and reminders about the functions of most buttons, list boxes and other controls by using the program's "on-the-spot" PopHelp system.

Just click your right mouse button on a control (buttons, list boxes, etc.) to get a "yellow stickie" with a brief explanation of the control's function. A sample:



---

#### **To get context-sensitive Help in ToolPanels and dialogs**

For more detailed assistance, press F1 or click the Help button on any ToolPanel or dialog box. These actions open this Help file and deliver you to the main topic for the ToolPanel or dialog in which you are working.

To reach Help's general contents page, click the Contents button at the top of any Help topic window.





The Display ToolPanel allows you to fine-tune your display for maximum performance and productivity. Use this ToolPanel to select a standard monitor mode, create a list of custom monitor modes, choose Desktop and Viewport\* sizes from among those available to your monitor, set up a virtual desktop, select a color depth, and adjust color settings for your display.

Click on the diagram below for ToolPanel notes and brief descriptions of Display ToolPanel features. For step-by-step help with specific functions, click on the highlighted text in the paragraph above.



**Note:** Some display cards do not support Viewport size changes, and thus do not support the creation of virtual desktops. When that condition exists, the Viewport Size list is disabled on the Display ToolPanel and all associated options—including Zoom options—are unavailable.



The Monitor Model list at the top of the Display ToolPanel allows you to quickly configure your display to match your specific brand and model.

If your brand/model is not listed or you aren't certain about its compatibility with any of those listed, you can create your own display mode.

#### **To select a specific monitor/model**

- 1** Click the Display button on the left side of any ToolPanel. The Display ToolPanel appears.
- 2** Click the arrow on the Monitor Model list box, then release your mouse button (to keep the list open).
- 3** Use the scroll bar on the open list to browse through the list of monitor models. If your model is not listed you can create a Custom Configuration.
- 4** If you find the name of your monitor, click it once. The list box closes and your monitor model name now appears in the list box window. Other areas of the ToolPanel are immediately reset to reflect the settings and options available to the selected monitor.
- 5** To change any of the other Display settings--Desktop size, Viewport\* size or Color Depth--or create a virtual desktop, see Configuring Your Display. To adjust or correct colors for your newly-configured display, see Correcting Your Display's Color. For instructions on adjusting other desktop settings, see the Desktop ToolPanel topics.

#### **Display ToolPanel overview/diagram**

**Note:** Some display cards do not support Viewport size changes, and thus do not support the creation of virtual desktops. When that condition exists, the Viewport Size list is disabled on the Display ToolPanel and all associated options--including Zoom options--are unavailable.



After selecting a monitor/model or defining a custom monitor configuration, use the three list boxes on the lower portion of the Display ToolPanel to choose a display resolution or create a virtual desktop. To change the color depth available to your Windows applications, see [Changing Color Depth](#).

### **To establish a single display resolution**

- 1** Click the Display button on the left side of any ToolPanel. The Display ToolPanel appears.
- 2** Click the arrow on the Desktop Size list box, then release your mouse button (to keep the list open).
- 3** Use the scroll bar on the open list to browse through the list of available display resolutions.
- 4** Select a resolution. The list box closes and your new resolution appears in the Desktop Size box. Note that both Viewport Size\* and Color Depth may change automatically when you change Desktop Size. The updated values reflect the range of values supported by your monitor and display resolution selections.
- 5** Click the arrow on the Viewport Size list box, then release your mouse button (to keep the list open).
- 6** Use the scroll bar on the open list to browse through the list of available display resolutions and refresh rates.
- 7** To set a single display resolution (not a virtual desktop), select the value that matches the previously-set Desktop Size resolution.

### **To create a virtual desktop\***

- 1** Repeat Steps 1 through 6 above.
- 2** Select a Viewport Size\* at least one resolution **lower** than your Desktop Size. For example, if you set your Desktop Size to 1024 X 768, a Viewport Size of either 800 X 600 or 640 X 480 establishes a virtual desktop.

### **◆ Display ToolPanel overview/diagram**

**Note:** Some display cards do not support Viewport size changes, and thus do not support the creation of virtual desktops. When that condition exists, the Viewport Size list is disabled on the Display ToolPanel and all associated options—including Zoom options—are unavailable.



If your particular monitor model does not appear on the Display ToolPanel's Monitor Models list, you can define your own monitor configuration.

You can add as many modes as you like to your Custom Configuration. Before doing so, however, we strongly recommend that you consult your monitor's manual and determine the range of supportable resolutions and refresh rates.

When you are through defining your custom monitor configuration you may want to set a single display resolution or create a virtual desktop. For those procedures, see [Configuring Your Monitor](#).

At the end of this topic is a diagram of the User Defined Monitor Modes dialog box. For brief descriptions of the dialog's features, click on any area of the diagram.

### To add custom display modes

- 1 Click the Display button on the left side of any ToolPanel. The Display ToolPanel appears.
- 2 Click the arrow on the Monitor Model list box, then release your mouse button (to keep the list open).
- 3 Use the scroll bar to scroll to the top of the open list.
- 4 Click the first item, User Defined Monitor. The list box closes and the User Defined Monitor Modes dialog appears.
- 5 Check your monitor's manual and determine the range of supportable resolutions and refresh rates. Also determine whether or not the supportable modes require horizontal or vertical polarity synchronization.
- 6 Select the lowest supportable resolution/refresh rate from the Available Modes list on the left of the dialog.
- 7 If the mode requires horizontal or vertical synchronization, first check the current state of the Horz Sync and Vert Sync buttons in the middle of the dialog. Clicking either button alternates it from "+" to "-" synchronization. If the selected mode requires an adjustment, click the appropriate synchronization button to the required state. If you are not sure whether the selected mode requires synchronization, leave the buttons at their default state (both at "-").
- 8 Click the Add button to add the selected mode to the custom monitor modes list ("Your Monitor Modes").
- 9 To test a newly added mode, select the mode on the Your Monitor Modes list, then click the Test button in the center of the dialog. The test allows you to see how the new mode will look (and perform as a virtual desktop, if the resolution is less than your current Desktop setting). It also allows you to center the mode via a Display Mode Centering dialog. Basic instructions for using it are contained in the dialog; for more detailed instructions, see [Centering a Custom Display Mode](#).
- 10 Repeat Steps 6 through 9 for as many additional supportable monitor modes as you require. To remove a mode, select it on the Your Monitor Modes list, then click the Remove button in the center of the dialog.
- 11 When you are through adding modes, you may want to establish a single display resolution or create a virtual desktop from your mode choices. For those procedures, see [Configuring Your Monitor](#).

## To delete modes from a Custom Configuration

You can return to the User Defined Monitor Modes dialog any time to add or remove a modes from your Custom Configuration. To remove a mode:

- 1 Click the Display button on the left side of any ToolPanel. The Display ToolPanel appears.
- 2 "User Defined" should already appear in the Monitor Model list box at the top of the ToolPanel. Click the arrow on the Monitor Model list box, then immediately click the already-highlighted User Defined item.
- 3 The list box closes and the User Defined Monitor Modes dialog appears.
- 4 From the Your Monitor Modes list on the right side of the dialog, select the mode you want to delete.
- 5 Click the Remove button in the center of the dialog.

## User Defined Dialog Diagram



## ◆ Display ToolPanel overview/diagram

1300 § 9416121217 § Copyright © 1994 Diamond Multimedia Systems, Inc.. All Rights Reserved.



Color depth is the maximum number of colors that can be displayed simultaneously. Higher color depths produce more accurate color representations and finer detail in high-color graphics, but lower depths mean faster graphics performance because there is less data to process. Depths range from 256 to 16.7 million colors.

### **When to select a color depth**

After using InControl Tools to choose a standard monitor configuration or build your own Custom Configuration, you need to select a Display Size to let Windows know the total area that will be used for data. When you do, a range of color depths that are supportable by your configuration and Display Size choice are automatically loaded into the Color Depth list box.

### **To select a color depth**

- 1** Click the Display button on the left side of any ToolPanel. The Display ToolPanel appears.
- 2** Click the arrow on the Color Depth list box, then release your mouse button (to keep the list open).
- 3** Use the scroll bar on the open list to browse through the list of available choices.
- 4** Select a color depth. The list box closes and the new value appears in the Color Depth box.

### **◆ Display ToolPanel overview/diagram**



**Note:** Not all display cards support the Color Correction capability offered by InControl Tools. If your card is among those that does not, the Color Correction button on the Display ToolPanel is disabled and the brightness, contrast and gamma controls are inaccessible.

---

All monitors display colors in a slightly different way. Lighting conditions, ambient temperature and color fluctuations combine with basic manufacturing differences to affect the way you see color on your screen.

InControl Tools' Color Correction feature make adjustments to compensate for such discrepancies and provide closer color matching between displayed and printed color.

Adjustments are made in the Color Correction dialog box, that you can open by clicking the Color Correction button at the bottom of the Display ToolPanel.

The effects of your adjustments are immediately visible, both in your overall picture and in any of a variety of color and monochrome test patterns that are available from a dropdown list box in the dialog.

### **Adjustable attributes**

Use the Color Correction dialog to fine-tune the following display attributes:

- ◆ Brightness
- ◆ Contrast
- ◆ Monochrome gamma
- ◆ RGB gamma, with control over each of the three color channels

### **The Color Correction dialog**

Click on the diagram below for Color Correction dialog notes and brief descriptions of features. For step-by-step help with specific functions, click on the Adjustable Attributes items listed above.



### ◆ **Display ToolPanel overview/diagram**



**Note:** Not all display cards support the Color Correction capability offered by InControl Tools. If your card is among those that does not, the Color Correction button on the Display ToolPanel is disabled and the brightness control is inaccessible.

---

### **To adjust brightness**

- 1** Click the Display button on the left side of any ToolPanel. The Display ToolPanel appears.
- 2** Click the Color Correction button. The Color Correction dialog box appears.
- 3** Click the arrow on the Test Pattern list box, then release your mouse button (to keep the list open).
- 4** Use the scroll bar on the open list to browse through the list of available choices.
- 5** Select a pattern by clicking on an item. (**Tip:** Color Map, Color Ramps, or Color Ramps with Dithering are the best test patterns to use for adjusting brightness.) The list box closes and the new pattern appears in the dialog's pattern view window.
- 6** The brightness adjustment bar is beneath the pattern view box. Click and hold your left mouse button on the bar's scroll button and slide the button right or left to increase or decrease brightness. You can also change the value by clicking on the arrows at either end of the adjustment bar. A numeric indicator at the left of the adjustment bar displays the current relative value (system default is 1.0). As the value changes, the brightness level is simultaneously reflected in the color pattern, the gamma line in the gamma curve viewing box and in your overall picture.
- 7** Brightness should be adjusted so that the color pattern shows an even linear transition from light to dark.

### **◆ Display ToolPanel overview/diagram**





**Note:** Not all display cards support the Color Correction capability offered by InControl Tools. If your card is among those that does not, the Color Correction button on the Display ToolPanel is disabled and the contrast control is inaccessible.

---

### **To adjust contrast**

- 1** Click the Display button on the left side of any ToolPanel. The Display ToolPanel appears.
- 2** Click the Color Correction button. The Color Correction dialog box appears.
- 3** Click the arrow on the Test Pattern list box, then release your mouse button (to keep the list open).
- 4** Use the scroll bar on the open list to browse through the list of available choices.
- 5** Select a pattern by clicking on an item. (**Tip:** Color Map, Color Ramps, or Color Ramps with Dithering are the best test patterns to use for adjusting contrast.) The list box closes and the new pattern appears in the dialog's pattern view window.
- 6** The contrast adjustment bar is beneath the pattern view box. Click and hold your left mouse button on the bar's scroll button and slide the button right or left to increase or decrease contrast. You can also change the value by clicking on the arrows at either end of the adjustment bar. A numeric indicator at the left of the adjustment bar displays the current relative value (system default is 1.0). As the value changes, the contrast level is simultaneously reflected in the color pattern, the gamma line in the gamma curve viewing box and in your overall picture.
- 7** Contrast should be adjusted so that the color pattern shows an even linear transition from light to dark.

### **◆ Display ToolPanel overview/diagram**



**Note:** Not all display cards support the Color Correction capability offered by InControl Tools. If your card is among those that does not, the Color Correction button on the Display ToolPanel is disabled and the gamma control is inaccessible.

---

### To adjust gamma

- 1 Click the Display button on the left side of any ToolPanel. The Display ToolPanel appears.
- 2 Click the Color Correction button. The Color Correction dialog box appears.
- 3 Click the arrow on the Test Pattern list box, then release your mouse button (to keep the list open).
- 4 Use the scroll bar on the open list to locate Color Ramps with Dithering. Click that item to close the list box and enter the pattern into the dialog's pattern view window.
- 5 To adjust the overall (monochrome) gamma setting, click on the white button among the set of four color channel buttons on the bottom right corner of the dialog. To adjust gamma for a specific color, click the red, green or blue color channel buttons.
- 6 The gamma adjustment bar is beneath the pattern view box. Click and hold your left mouse button on the bar's scroll button and slide the button right or left to increase or decrease gamma for the selected color channel. Increasing gamma increases the contrast in the darker tones of the display while decreasing contrast in the brighter tones.

You can also change the value by clicking on the arrows at either end of the adjustment bar. A numeric indicator at the left of the adjustment bar displays the current relative value (system default is 1.0). As the value changes, the new gamma level is simultaneously reflected in the color pattern, the gamma curve viewing box and in your overall picture.

- 7 Gamma should be adjusted so that the small dithered squares in the test pattern most closely match the solid background colors.

### ◆ Display ToolPanel overview/diagram



The Desktop ToolPanel allows you to make adjustments to icon captions and other Windows resources. Such changes may be required after switching screen sizes in order to provide a more aesthetically pleasing or practical match of resources and resolution.

Click on the diagram below for ToolPanel notes and brief descriptions of Desktop ToolPanel features. For step-by-step help with specific Desktop ToolPanel functions, see the following topics:

- ◆ [Changing Your Icon Caption](#)
- ◆ [Changing the Size of Your Cursor](#)
- ◆ [Changing the Color of Your Cursor](#)
- ◆ [Adjusting Resource Resolution](#)
- ◆ [Changing Resource Size](#)





Whenever you change your display configuration, you may want to change your icon caption to a font, style and size that better matches the new look and proportions of your desktop.

Icon caption changes apply to all icons in Windows--from those in the Control Panel and Program Manager to those that appear at the bottom of your screen when you minimize a window.

### **To change your icon caption**

- 1** Click the Desktop button on the left side of any ToolPanel. The Desktop ToolPanel appears.
- 2** Click the arrow on the Font Name list box, then release your mouse button (to keep the list open).
- 3** Use the scroll bar on the open list to browse through the available choices.
- 4** Select a font by clicking on one of the list items. The list box closes and a sample of the new font is displayed in the Sample viewer above the list box.

If you change your mind or want to select a new font, repeat steps 3 through 5.

- 5** To change the font style or size, repeat steps 3 through 5 using the Font Style or Size list boxes.

### **◆ Desktop ToolPanel overview/diagram**

2100 § 9416121217 § Copyright © 1994 Diamond Multimedia Systems, Inc.. All Rights Reserved.



InControl Tools allows you to change the size of your cursor (that you may also know as your pointer or mousepointer) at the touch of a button.

The change applies to the set of system cursors. The change is effective immediately and remains in effect in subsequent Windows sessions until you change cursor size again.

**To change the size of your cursor**

- 1** Click the Desktop button on the left side of any ToolPanel. The Desktop ToolPanel appears.
- 2** Available cursor sizes are represented by a group of three buttons--each bearing an arrow pointer--in the Cursor Preferences area of the ToolPanel. The Windows default size is the smallest of the three. Current size is indicated by the depressed button. To switch sizes, click one of the other two buttons.

**Also see:** Changing the color of your cursor

**◆ Desktop overview/diagram**



**Note:** Not all display cards support cursor color changes. If your card does not support this feature, the cursor color selection pad won't appear on your Desktop ToolPanel.

---

InControl Tools allows you to change the color of your cursor (that you may also know as your pointer or mousepointer) at the touch of a button.

The change applies to the set of system cursors. The change is effective immediately and remains in effect until you change the color again.

#### **To change the color of your cursor**

- 1** Click the Desktop button on the left side of any ToolPanel. The Desktop ToolPanel appears.
- 2** The current cursor color is indicated by a depressed button on the color selection pad near the top of the ToolPanel. To change the cursor color, click one of the other 15 buttons. The cursor changes color immediately.

**Also see:** [Changing the size of your cursor](#)

#### **[Desktop overview/diagram](#)**

2201 § 9416121217 § Copyright © 1994 Diamond Multimedia Systems, Inc.. All Rights Reserved.



Logical dpi (dots per inch) is the number of pixels on a linear inch of display screen. VGA displays normally offer 96dpi, 8514-type displays have 120.

InControl Tools allows you to change the logical dpi, and thus change the way text and graphics appear on the screen. You can also control the vertical and horizontal proportions of screen elements by adjusting the dpi counts separately downward (as far as 96) or upward (to 150).

Changing the logical dpi changes the way text and graphics appear on your screen, but without changing the actual font size for printing and other output purposes. It also affects the size and proportions of certain other resources--such as dialog boxes--whose dimensions are calculated on the current logical dpi.

This feature addresses the problem of uncomfortably small font sizes when high screen resolutions are applied to smaller-screen monitors. For instance, switching to a screen resolution of 1024 X 780 on a 14-inch monitor allows you to get more onto your screen by reducing the display size of windows and resources--including font resources. InControl Tools' logical dpi adjustment feature allows you to increase the display size of resources to a more comfortable level.

**Note:** Logical dpi changes are reflected in the text and in the rulers in the Sample view box at the top of the Desktop ToolPanel. When using a Viewport\* resolution of 1024 X 768 or greater on a VGA monitor, you can precisely calibrate screen measurement to printed output by adjusting the logical dpi (as instructed below) until the one-inch mark on the Sample box's rulers match one inch on a ruler placed against the screen.

### **To adjust logical dpi**

- 1** Click the Desktop button on the left side of any ToolPanel. The Desktop ToolPanel appears.
- 2** To change both horizontal and vertical dpi proportionately, click the up or down arrows on the first spin control.
- 3** To adjust horizontal and vertical dpi separately, either type new values into the corresponding boxes or use the spin controls next to the boxes to adjust the values upward or downward.

### **◆ Desktop ToolPanel overview/diagram**

**Note:** Some display cards do not support Viewport size changes, and thus do not support the creation of virtual desktops. When that condition exists, the Viewport Size list is disabled on the Display ToolPanel and all associated options--including Zoom options--are unavailable.



InControl Tools allows you to change the size of Windows resources such as title bar depth and system buttons (system menu, maximize, minimize) to better match the resolution and proportion of a newly configured display.

### **To change resource size**

- 1** Click the Desktop button on the left side of any ToolPanel. The Desktop ToolPanel appears.
- 2** Your current resource size--either Small or Large--appears in the Resource Size list box. To change sizes, click the arrow on the list box, then click the size to that you want to switch. The list box closes and the new size is displayed in the list box window.

The new size will not become effective until you restart Windows. After restarting, it will remain in effect in each subsequent Windows session until you switch sizes again.

- 3** If you need to make changes in any other area of InControl Tools, make them now. If you are through making changes and you want to effect all changes made during this InControl Tools session, click the OK button. To dismiss InControl Tools and abort any changes made during this session, click the Cancel button.

### **◆ Desktop ToolPanel overview/diagram**



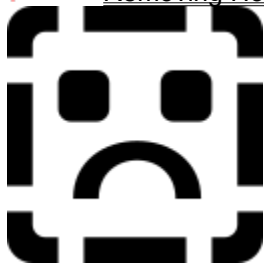


The Hot Keys ToolPanel allows you to dedicate up to 16 keyboard combinations, mouse button or keyboard/button assignments to tasks such as instant program-launching and quick access to InControl Tools features.

The ToolPanel also allows you to program a Hot Key to call a special popup menu, from which you can select from among a range of InControl tasks. Some of these tasks, such as Application Association linking, are accessible only from the popup menu.

Click on the diagram below for brief descriptions of ToolPanel components. For step-by-step help with procedures, check the following topics:

- ◆ [Adding Hot Key Assignments](#)
- ◆ [Assigning the InControl Popup Menu to a Hot Key](#)
- ◆ [Using the InControl Popup Menu](#)
- ◆ [Disabling the InControl Popup Menu Assignment](#)
- ◆ [Assigning Hot Keys to Run Other Programs](#)
- ◆ [Temporarily Disabling Hot Keys](#)
- ◆ [Removing Hot Key Assignments](#)

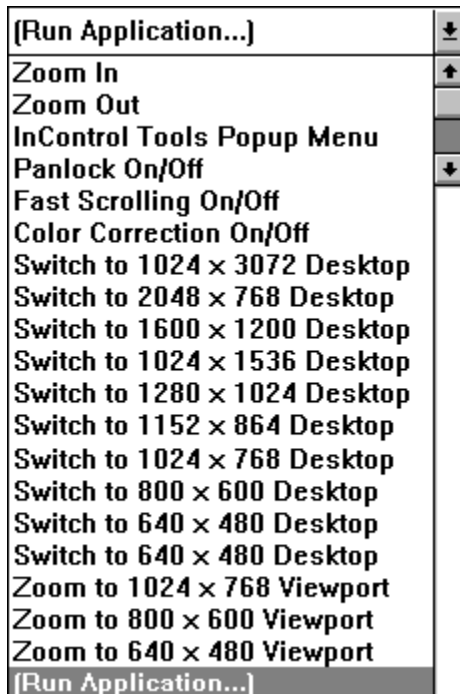




### To add a new Hot Key or button assignment

- 1 Click the Hot Keys button on the left size of any ToolPanel. The Hot Keys ToolPanel appears.
- 2 If you want to include the Shift, Ctrl or Alt modifier keys in the new assignment, click the appropriate checkbox for the key or keys you want. You can choose any one or any combination of these three keys. You can also choose to exclude any or all from the new assignment. To exclude a currently checked modifier assignment, click its checkbox to clear the "X" from it.
- 3 Select a function key or mouse button assignment by clicking the arrow on the Function Key or Mouse Button list box (release the mouse button right away to keep the list open). Use the open list's scroll bar to browse the available assignments (F1 through F12 plus three mouse buttons), then select one to close the list box. The new key or button assignment appears in the list window.
- 4 Bind an action to the new assignment by clicking the arrow on the Hot Key Action list box (release the mouse button right away to keep the list open). Use the open list's scroll bar to browse the available actions. All except Run Application (covered in another topic) are InControl Tools functions. For a description of these functions, click on the picture below. (**Note:** the Run Application item in the picture takes you to a new topic; to return to this topic, use Help's Back button).
- 5 Click the Add Hot Key button near the bottom of the ToolPanel. The new assignment is added to the Hot Key Bindings list.

### Sample Hot Key Action list



◆ [Hot Keys ToolPanel overview/diagram](#)





If you choose to install the default Hot Keys the first time you run InControl Tools, the InControl Popup Menu is automatically assigned to your right mouse button. If that is the case, you can access the popup menu from anywhere in Windows by clicking your right mouse button. To assign the Popup Menu to a different Hot Key or mouse button, follow the instructions below.

To temporarily disable the current assignment for the Popup Menu, see [Disabling the InControl Popup Menu Assignment](#). To remove the assignment altogether, see [Removing Hot Key Assignments](#).

### **To Assign the InControl Popup Menu to a Hot Key**

- 1** Click the Hot Keys button on the left side of any ToolPanel. The Hot Keys ToolPanel appears.
- 2** If you want to include the Shift, Ctrl or Alt modifier keys in the new assignment, click the appropriate checkbox for the key or keys you want. You can choose any one or any combination of these three keys. You can also choose to exclude any or all from the new assignment. To exclude a currently checked modifier assignment, click its checkbox to clear the "X" from it.
- 3** Select a function key or mouse button assignment by clicking the arrow on the Function Key or Mouse Button list box (release the mouse button right away to keep the list open). Use the open list's scroll bar to browse the available assignments (F1 through F12 plus three mouse buttons), then select one to close the list box. The new key or button assignment appears in the list window.
- 4** Click the arrow on the Hot Key Action list box (release the mouse button right away to keep the list open). Use the open list's scroll bar to locate InControl Tools Popup Menu.
- 5** Click the InControl Tools Popup Menu item to close the list box.
- 6** Click the Add Hot Key button. The new assignment appears in the Hot Key Bindings list.

### **Hot Keys ToolPanel overview/diagram**



The InControl Popup Menu allows you to switch resolutions, reconfigure your virtual desktop, control overall audio volume, create application associations and switch many of InControl's other dynamic features on or off without having to open the main window or restart Windows.

Before it can do any of this, however, the popup menu must be bound to a key combination or mouse button. For that procedure, see [Assigning the InControl Popup Menu to a Hot Key](#).

For descriptions of Popup Menu items, click on the picture below.



Also see: [Controlling Dynamic Features](#)



You can prevent the InControl Popup Menu from appearing when its Hot Key is activated by checking the Disable Popup Menu checkbox at the bottom of the Hot Keys ToolPanel.

You may want to disable the menu temporarily if it conflicts with another running program, macro assignment or test process. Using the "Disable" checkbox allows you to keep the assignment on the bindings list for possible reactivation. To reactivate the assignment, just reopen the Hot Keys ToolPanel and clear the Disable Popup Menu checkbox by clicking on its "X".

If you want to remove the assignment altogether, locate and then click on the InControl Tools Popup Menu item from the assignment list at the top of the Hot Keys ToolPanel, then click the Delete Hot Key button.

◆ **Hot Keys ToolPanel overview/diagram**

3299 § 9416121217 § Copyright © 1994 Diamond Multimedia Systems, Inc.. All Rights Reserved.



For notes and descriptions of Run dialog buttons and features, click on the diagram at the end of this topic.

### **To assign a Hot Key or mouse button to run a program**

- 1** Click the Hot Keys button on the left side of any ToolPanel. The Hot Keys ToolPanel appears.
- 2** If you want to include the Shift, Ctrl or Alt modifier keys in the new assignment, click the appropriate checkbox for the key or keys you want. You can choose any one or any combination of these three keys. You can also choose to exclude any or all from the new assignment. To exclude a currently checked modifier assignment, click its checkbox to clear the "X" from it.
- 3** Select a function key or mouse button assignment by clicking the arrow on the Function Key or Mouse Button list box (release the mouse button right away to keep the list open). Use the open list's scroll bar to browse the available assignments (F1 through F12 plus three mouse buttons), then select one to close the list box. The new key or button assignment appears in the list window.
- 4** Click the arrow on the Hot Key Action list box (release the mouse button right away to keep the list open). Use the open list's scroll bar to locate Run Application.
- 5** When you click the Run Application item, a Run dialog box appears. Type the path, filename and any needed parameters into the dialog's command line box. To find the program you want, click the Browse button to call a standard Windows search dialog.
- 6** When the command line is correct, click OK to dismiss the Run dialog.
- 7** Click the Add Hot Key button near the bottom of the ToolPanel. The new assignment is added to the Hot Key Bindings list.



### **◆ Hot Keys ToolPanel overview/diagram**

3300 § 9416121217 § Copyright © 1994 Diamond Multimedia Systems, Inc.. All Rights Reserved.



You can disable all InControl Hot Key assignments any time by opening the Hot Keys ToolPanel and clicking the Ignore Hot Keys checkbox.

You may want to disable Hot Keys temporarily if one or more assignments conflict with the operation of another running program, macro assignment or test process. Using the "Ignore" checkbox allows you to keep all assignments intact for possible reactivation. To reactivate all Hot Key assignments, just click the Ignore Hot Keys checkbox to clear it.

You can also permanently remove an unwanted or unneeded Hot Key assignment by selecting the assignment from the bindings list and then clicking the Delete Hot Key button.

◆ **Hot Keys ToolPanel overview/diagram**

3400 § 9416121217 § Copyright © 1994 Diamond Multimedia Systems, Inc.. All Rights Reserved.





### **To remove a Hot Key assignment**

- 1** Click the Hot Keys button on the left side of any ToolPanel. The Hot Keys ToolPanel appears.
- 2** The Hot Key Bindings list displays all current key and button assignments. Click on the one you want to delete.
- 3** Click the Delete Hot Key button at the bottom of the ToolPanel. The item is immediately removed from the Hot Key Bindings list.

### **◆ Hot Keys ToolPanel overview/diagram**

3500 § 9416121217 § Copyright © 1994 Diamond Multimedia Systems, Inc.. All Rights Reserved.



InControl Tools' "dynamic" features are those that allow switching or status changes directly from the desktop icon menu, the InControl Popup Menu or directly via a Hot Key or mouse button binding.

Desktop and Viewport\* sizes can be controlled dynamically, and several other features--including your screen saver, pan locking and fast scrolling capabilities, color correction and color resolution settings, Hot Key assignments and even the InControl Popup Menu itself--can be selected or switched on or off without having to reenter InControl's main configuration window.

### Switching dynamics

Most dynamic features can be switched on or off from either the desktop icon or popup menus. To use the switches, simply click one of the items listed below on the desktop icon menu or, if available, the InControl Popup Menu, then click On or Off from the secondary popup.

Note that if you use the desktop icon menu to switch off Hot Keys--that in turn prevents access to the popup menu--you'd effectively disable dynamic resolution-switching as well. To change resolutions again, you'd either have to switch the Hot Key menu back on or open the main configuration window and change resolutions from the Display ToolPanel.

### "Switchable" features list (with possible reasons for using the switches)

\* **Note:** Not all display cards support the ability to switch pan locking, fast scrolling and color correction states. If you are using such a card, the on/off switches normally available to these features are disabled.

---

- ◆ **Always on Top.** This switch (it is checked when you click it on) allows you to keep the InControl Desktop Menu icon on top of all other windows on your desktop.
- ◆ **Hot Keys.** One or more keyboard or mouse button assignments may conflict with the shortcut keys or mouse actions required by other currently running programs. You can turn Hot Keys back on when the conflicts are no longer an issue.
- ◆ **Popup Menu.** As with other Hot Keys, the key combination or mouse button needed to call the popup menu could cause a conflict with another currently running program's shortcut keys.
- ◆ **Screen Saver.** Allows you to switch your screen saver on or off from the desktop. This feature is available only if you have a screen saver selected in the Power Management ToolPanel.
- ◆ **Fast Scrolling.** If you have a high-powered display card, you may want to slow down the speed at which text or graphics scrolls past when you use scroll bars. Turning off fast scrolling does the job. When you are no longer using the affected program you can turn the feature back on.
- ◆ **Pan Locking.** This feature, the only one of the group that is normally off, can be switched on when you are using a virtual desktop and you need to freeze the currently visible portion of the desktop in place. To resume panning capabilities, turn the lock off again.
- ◆ **Color Correction.** If you have made any adjustments to brightness, contrast or gamma in the Color Correction dialog (available through the Display ToolPanel), you can restore your display back to its original default state by turning this switch to Off. You may want to use the switch when working with some graphics applications or viewing certain types of images (if only to see what the images look like without your color adjustments). Again, you can switch your color corrections back on any time.

### Switching from the Hotkeys ToolPanel

You can also switch the popup menu and all other Hot Key assignments on or off by using the two checkboxes at the bottom of the Hot Keys ToolPanel. The status of these checkboxes is reflected in

the Hot Keys and Popup Menu on/off switches in the desktop icon menu.

### **Other dynamic features**

Two other built-in dynamic features are available for assignment to Hot Keys and InControl menus:

◆ **Maximize To.** Normally, when you click the Maximize button (the upward-pointing arrow in the top right corner of a window) or choose the Maximize from a window's system menu, the window fills your entire visible screen surface. InControl Tools gives you the choice of maintaining this standard behavior or, if you are using a virtual desktop, to maximize the window to fill the entire virtual screen instead. If assigned to a Hot Key, Maximize To appears on both the desktop icon menu and InControl's popup menu (that also needs a Hot Key assignment). From either menu, you can choose to Maximize To the Desktop (the larger virtual screen) or to the Viewport (the screen surface you can see at any one time).

◆ **Center To.** Normally, most Windows dialog boxes are centered on your visible screen surface (the Viewport). If, however, you are using a virtual desktop, you may want to center dialogs relative to the entire virtual screen. If assigned to a Hot Key, Center To appears on both the desktop icon menu and InControl's popup menu (that also needs a Hot Key assignment). From either menu, you can choose to center your dialogs relative to the Desktop (the larger virtual screen) or to the Viewport (the screen surface you can see at any one time).

**Note:** Some display cards do not support Viewport size changes, and thus do not support the creation of virtual desktops. When that condition exists, the Viewport Size list is disabled on the Display ToolPanel and all associated options--including Center To and Maximize To--are unavailable.

### ◆ **Hot Keys ToolPanel overview/diagram**

3900 § 9416121217 § Copyright © 1994 Diamond Multimedia Systems, Inc.. All Rights Reserved.



This special feature, available only from the Popup Menu, allows you to assign the current desktop settings to a currently running application. After creating the association, the desktop configuration automatically switches to the assigned settings every time the associated application is run.

You can then create the association by clicking the Edit submenu item and then clicking the Add button when the Edit dialog appears. The application name is then added to the list, with the association created between the application and the current InControl configuration. To delete an association, click the Delete button. To exit the Edit dialog, click OK or Cancel. The associations feature can be switched off any time by clicking Associations from the Popup menu and choosing Off from the submenu.

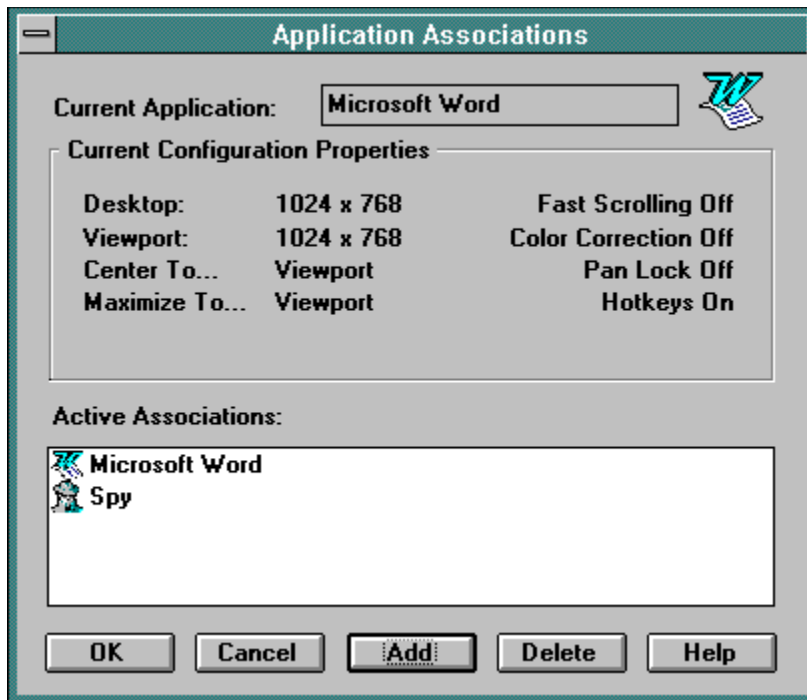
#### **To assign a desktop configuration to an application**

- 1** Open the application for which you want to create the association.
- 2** Using the Display and Desktop ToolPanels (call each by clicking their respective Option buttons on the left side of any ToolPanel), modify the current desktop configuration until it is how you want it to appear every time the associated application is run.
- 3** Return to the application to make it the current window.
- 4** Use the assigned Hot Key or menu button to call the InControl Tools Popup Menu.
- 5** Select the Associate App item. A submenu appears.
- 6** Select Edit from the submenu. The Application Associations dialog box appears (see below) with the current application and all current desktop settings listed in the top portion. (The bottom portion lists all other assignments).
- 7** If all settings are correct, click the Add button. The new association is added to the list of all current associations in the bottom portion of the dialog box.
- 8** Close the dialog by clicking OK.

#### **To delete an association**

- 1** Repeat steps 4 through 6 above.
- 2** Select the association you want to remove by selecting the application name from the list at the bottom of the dialog box.
- 3** Click Delete, then OK to dismiss the dialog box.

To disable all associations, click Associations from the Popup Menu and choose Off from the submenu.





The Audio ToolPanel allows you to open and play Wave and MIDI files and provides you with the means to directly control volume, balance and channel selection for your audio devices.

### **Audio Requirements**

InControl Tools' audio features require that you have a Windows multimedia-compatible sound card (such as Diamond Multimedia's Sonic Sound) installed in your system and all drivers correctly configured.

If your system does not provide the required audio support, the Audio ToolPanel button will be disabled (grayed out) on all ToolPanels and InControl's audio features will be unavailable.

### **Features and functions**

Click on the diagram below for brief descriptions of Audio ToolPanel features. For step-by-step help with specific functions, see the following topics:

 [Opening and Playing Wave and MIDI Files](#)

 [Adjusting Audio Levels and Settings](#)






InControl's audio player allows you to open and play these popular sound file types:


- ◆ Wave (extension \*.WAV).
- ◆ General MIDI (Musical Instrument Digital Interface; extension \*.MID).
- ◆ RMI Sound Sample (another type of MIDI file; extension \*.RMI).


Wave and MIDI file samples are widely available on bulletin boards and through online services.

### To Open and Play a Wave or MIDI file:

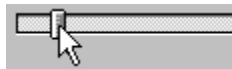
- 1 Click the Audio button on the left side of any ToolPanel. The Audio ToolPanel appears.
- 2 Click the File Open button near the bottom of the ToolPanel . If a file is not already loaded into the ToolPanel, a single menu item ("Open") appears. If a file is already loaded, the popup menu will show several other items (that are discussed later in this topic). Click the Open item to call a standard file search dialog box.
- 3 Use the dialog to locate a \*.WAV, \*.MID or \*.RMI file. When you single click a valid file type, a testing unit immediately appears in the dialog box in the space below the dialog's command buttons. The testing unit includes the name and playing length of the file, as shown here:

To test the file, click the test unit's Play button (the forward-pointing arrow). If the file is the one you want, click OK to dismiss the dialog. If not, choose another file.

- 4 After loading a file into the ToolPanel, make any necessary volume and balance adjustments, then click the Play button  to play the sound.

**Note:** As soon as it is clicked, the Play button becomes a Stop button , that allows you to halt the playing of the file anytime, but keep it in its current position. To resume play, click the Stop button a second time.

As a file plays, sound level indicators are activated in the top portion of the ToolPanel, and a button moves across the bar at the bottom of the ToolPanel to indicate the file's progress. You can reposition the playing starting point anytime by dragging the button to a new point on the bar.



### Other Audio File Commands

When a file is loaded into the Audio ToolPanel, the following commands appear below the Open command in the File Open menu:

- ◆ **Close.** Allows you to clear the currently loaded file from the Audio ToolPanel. The currently loaded file is also cleared whenever you load a new file.
- ◆ **Copy.** Allows you to copy the currently loaded file to the Windows Clipboard. You can then paste the file as a sound object into any Windows application (such as Write) that is capable of receiving such objects. For more on object linking and embedding (OLE), see your Windows manuals.
- ◆ **Command.** Opens a dialog box into which you can type MCI (Multimedia Command Interface) command strings. MCI strings, from basic commands such as "play", "pause" and "stop" to more advanced commands such as "seek to start" and "seek to end", apply only to the currently loaded file. The MCI command set is generally used only by advanced users and multimedia programmers, though a great deal of guidance and documentation regarding this built-in Windows interface may be found in many

popular online service forums (including the Microsoft Knowledgebase).

**Also see:** [Adjusting Audio Levels and Settings](#)

♦ [Audio ToolPanel overview/diagram](#)

4100 § 9416121217 § Copyright © 1994 Diamond Multimedia Systems, Inc.. All Rights Reserved.





In addition to letting you [play and test Wave and MIDI files](#), the Audio ToolPanel allows you to establish volume and balance levels and control many other aspects of your audio devices and audio output.

### **Adjusting Volume and Balance**

The Audio ToolPanel contains a set of four volume/balance slider controls: one each for independent control of Wave, MIDI and CD/Auxiliary port output, and a Master control that allows you to adjust all audio output simultaneously.

To adjust volume for any device, drag the button on a vertical slider upward to increase volume and downward to decrease volume. Volume adjustments may be made while a file, CD or any other device is playing.

Each device may also be switched between Stereo or Mono mode by clicking either the Stereo or Mono radio buttons below the sliders. To switch all devices simultaneously, use the Stereo/Mono radio buttons below the Master slider control.

When a device is in Stereo mode, you can adjust the balance between left and right channel output by adjusting the left and right volume slider controls independently. To maintain even balance adjustments, click and drag in the area between the two sliders.

### **Muting Audio Output**

You can silence output for any currently playing device by clicking the Mute checkbox below the device's volume/balance control. **Note:** Mute silences the device, but does not stop it; to stop output, you must halt it at its source (e.g., by clicking the Stop button at the bottom of the ToolPanel for a currently playing Wave or MIDI file).

To mute all currently playing sound at once, click the Mute box below the Master control.

**Also see:** [Opening and Playing Wave and MIDI Files](#)

### **[♦ Audio ToolPanel overview/diagram](#)**

4200 § 9416121217 § Copyright © 1994 Diamond Multimedia Systems, Inc.. All Rights Reserved.



The Video ToolPanel provides a viewing/testing board for the playback of full-motion video files. While a sequence plays, you can adjust playback in a number of ways to establish peak performance and quality.

### **VFW Requirement**

Operation of InControl Tools' full-motion video features requires the presence of the runtime version of Microsoft's Video for Windows that was supplied with your Diamond Multimedia product. If VFW was not supplied with your display card and your display card does not support the video features, the Video ToolPanel button will be disabled (grayed out) on all ToolPanels and the features described below will be unavailable. For more on the VFW requirement, see [Solutions](#).

### **Features and functions**



Click on the diagram below for notes and brief descriptions of Video ToolPanel features. For step-by-step help with specific functions, see the following topics:

- ◆ [Playing a Full-Motion Video File](#)
- ◆ [Video Playback Adjustments](#)





### To play an \*.AVI file

- 1 Click the Video button on the left side of any ToolPanel. The Video ToolPanel appears.
- 2 Click the Video Options button  below the playback window, then choose Open. A standard file search dialog box appears.
- 3 Locate an \*.AVI file and click OK to dismiss the search dialog. The file appears in the video playback window.
- 4 Click the Play button  to initiate playback. Note that the Play button immediately changes to become the Stop button.

As the sequence plays, the button on the video progress indicator moves left to right. If Auto Repeat is checked (at the bottom of the ToolPanel), the sequence will loop to the start and replay each time the indicator reaches the end of the sequence.

To halt playback, click the Stop button . The button reverts to its Play function.

To "freeze" playback and scan, click and hold your left mouse button on the progress indicator button below the playback window, then slowly move the mouse to move the slider left or right along the indicator bar. When you release the mouse button, playback continues from the current point in the sequence.

**Note:** You can make a number of adjustments—including playback speed, audio level, picture size and other configuration adjustments—to a currently-loaded file by choosing items from the Video Options menu. To call the menu, click the Show Video Options button (see Step 2 above) or click your right mouse button on the progress indicator bar or anywhere in the playback window. For a description Video Option features, as well as descriptions of the ToolPanel's Video Accelerator and Optimization options, see [Adjusting Video Playback](#).

### ♦ [Video ToolPanel overview/diagram](#)



The Video ToolPanel provides a number of configuration and enhancement options to let you fine-tune the playback of full-motion video files. Options include:

### Optimization type selector

A dropdown listbox below the playback window allows you to choose the form of optimization for video playback.

Choices are Graphic Performance, Video Performance and Video Quality. The most appropriate optimization depends on several factors, including the quality of the video file and the settings that were used to create it.

**Note:** This selector is not available to all display cards. If your card does not support video acceleration, both the Video Acceleration checkbox (see below) and the Optimization Type Selector are disabled and optimization type defaults to Graphic Performance.

### Video Acceleration Selector


A checkbox at the bottom of the Video ToolPanel that allows you to turn video acceleration on or off.

### Auto Repeat selector

A checkbox at the bottom of the Video ToolPanel allows you to turn continuous-playback capability on or off. When on (if the box is checked), pressing the Play button causes the currently-loaded video file to repeat playback until you press the Stop button.

**Note:** If you turn Auto Repeat off (remove the "X" from the checkbox) while a sequence is in continuous-playback mode, the sequence will still repeat until you stop it and start it again.

### Video Options menu

Click the Video Options button  below the playback window on the Video ToolPanel to call a menu to let you load a video file or set options for a running sequence.

If a file is not already loaded into the ToolPanel, only the Open item appears when you click the button. If a file is loaded, the entire options menu is available.

Click on the items below for option descriptions.

<b>V</b> iew	▶
<b>V</b> olume	▶
<b>S</b> peed	▶
<b>O</b> pen...	Ctrl+O
<b>C</b> lose	
<b>C</b> opy	Ctrl+C
<b>C</b> onfigure...	Ctrl+D
<b>C</b> ommand...	Ctrl+F5

### [Video ToolPanel overview/diagram](#)



The Power Management ToolPanel allows you to manage your monitor's power-saving features\* and provides an easy way to coordinate these features with your Windows screen savers.

Such "Green" display systems work in conjunction with the Display Power Management System (DPMS) by allowing you to set delays for up to two power-reduction modes in addition to any supplied or selected screen saver. Your monitor must also be DPMS-compliant.

**Note:** The system employed by InControl Tools to enable power-saving features is also fully compliant with the Environmental Protection Agency's (EPA) Energy Star standards, that require a maximum output of no more than 30 watts when the monitor is in power-suspension (standby) mode.

### Features and functions

Click on the diagram below for notes and brief descriptions of Power Management features. For step-by-step help with specific Power Management functions, see the following topics:

- ◆ [Managing Your Display's Power Consumption](#)
- ◆ [Changing or Adjusting Your Screen Saver](#)
- ◆ [Testing Your Screen Saver](#)
- ◆ [Changing the Screen Saver Delay](#)
- ◆ [Viewing or Changing Screen Saver Options](#)
- ◆ [Disabling Power Management Options](#)



\* Available only on hardware that supports the Display Power Management System (DPMS). Check your monitor's manual for compliance information.



A screen saver is a moving graphic or bitmap that appears on your display after a certain interval of keyboard and mouse inactivity has elapsed.

These popular programs are primarily used to extend monitor life by interrupting static images. Many also let you enable password security to your unattended system. When you touch a key or move the mouse (and enter a password, if required), the screen saver is dismissed and you can resume your Windows session.

Windows' default screen saver is a blank screen with no special customization options. Default delay time--the interval of inactivity before which the screen saver switches on--is 10 minutes.

### **To change your screen saver**

- 1** Click the Power Management button on the left side of any ToolPanel. The Power Management ToolPanel appears.
- 2** Click the arrow on the screen saver list box. Release your mouse button to keep the list box open.
- 3** Use the scroll bar to locate the screen saver you want, then click it. The list box closes.

Your new screen saver is now ready for test and adjustment.

### **Next:**

[Testing your screen saver](#)

[Adjusting your screen saver delay interval](#)

[Setting screen saver options](#)

### **[◆ Power Management overview/diagram](#)**



**To test your screen saver**

- 1** Click the Power Management button on the left side of any ToolPanel. The Power Management ToolPanel appears.
- 2** Click the Test button near the top of the ToolPanel. The screen saver activates immediately.
- 3** Move your mouse to dismiss the screen saver and resume your InControl Tools session.

**◆ Power Management overview/diagram**

6200 § 9416121217 § Copyright © 1994 Diamond Multimedia Systems, Inc.. All Rights Reserved.



### **To change the screen saver delay**

- 1** Click the Power Management button on the left side of any ToolPanel. The Power Management ToolPanel appears.
- 2** In the Delay Before Screen Saver edit box, type the interval of inactivity that must lapse before your screen saver switches on. The value, in minutes, must be less than both the power suspension and Power-off Modes (if those power management features are available and in use).

The screen saver delay interval is also graphically represented in a dynamic bar chart in the lower area of the ToolPanel.

### **◆ Power Management overview/diagram**

6300 § 9416121217 § Copyright © 1994 Diamond Multimedia Systems, Inc.. All Rights Reserved.





Most screen savers offer customization or security options. Such options differ widely among programs, however, and can include anything from elaborate multi-level password security systems to simple graphics speed settings.

### **To change screen saver options**

- 1** Click the Power Management button on the left side of any ToolPanel.
- 2** Click the Setup button at the bottom of the ToolPanel. A setup dialog appears for the screen saver whose name appears in the Screen Saver list box at the top of the ToolPanel. If the screen saver offers no options, a message to that effect appears instead.
- 3** Make your adjustments.
- 4** Some setup dialogs offer a test button within the dialog. If not, you can test the new settings after closing the dialog by clicking the Test button at the bottom of the Power Management ToolPanel.

### **◆ Power Management overview/diagram**

6400 § 9416121217 § Copyright © 1994 Diamond Multimedia Systems, Inc.. All Rights Reserved.



Some programs aren't able to handle the processing interruption that occurs when a screen saver activates. These programs are few in number (some communications programs fall into this category), but data can be lost or a crash can occur if they're running when a screen saver switches on.

If you suspect that a program you are using is going to behave unpredictably in the presence of a screen saver, you may want to disable all screen saving capabilities or extend the delay to a length of time that will allow your suspect program to run uninterrupted.

**To disable your screen saver**, click the Power Management button on the left side of any ToolPanel. Then, either:

- ◆ Change the number in the Screen Saver Before Delay edit box to zero; or
- ◆ Click the arrow on the screen saver list box and release the mouse button to keep the box open. Then use the scroll bar to move to the top of the list and click on the first item, "(None)."

**Note:** If your monitor is equipped with automatic power-reduction capabilities and your graphics card is DPMS-compliant, you will have to set both the Display Before Suspend Mode and Delay Before Power Off Mode intervals to zero as well. For more on these devices and their operation, see [Managing Your Display's Power Consumption](#).

◆ **Power Management overview/diagram**



Most quality monitors are now manufactured with Display Power Management System capabilities that allow them to automatically switch into low-power standby and total power-down modes after a certain interval of keyboard and mouse inactivity. As with screen savers, you can "reawaken" your monitor from an energy-saving slumber by moving the mouse or pressing a key.

**To set or change Power Management options**

- 1** Click the Power Management button on the left side of any ToolPanel.
- 2** In the Delay Before Suspend Mode edit box, type the interval of inactivity that must lapse before your monitor switches to its suspension (level-one) power-saving mode. This interval, specified in minutes, must be greater than your screen saver delay interval and less than your power-off interval. If you specify an interval of zero, both power-saving modes are disabled.
- 3** In the Delay Before Power-off Mode edit box, type the interval of inactivity that must lapse before your monitor switches to its Power-off Mode. The value must be greater than both the screen saver and power suspension delays. If you specify an interval of zero, the monitor will not switch into Power-off Mode.

Both the power suspension and power-off intervals are also graphically represented in a dynamic bar chart in the center of the ToolPanel.

**Note:** The Test and Setup buttons are for use with screen savers only.

**◆ Power Management overview/diagram**



## Q:

**InControl Tools does not start anymore when Windows starts. I can start it from Control Panel, but when I'm through with it, my Hot Keys, screen-switching and other on-the-fly features do not seem to work.**

For its Hot Keys, screen-switching and other dynamic features to be present, InControl Tools' icon has to be present on your desktop.

InControl is actually made up of two separate executable files, called DCSCPE.EXE and DCSHKEY.EXE, both of which are normally installed into your Windows directory. It is DCSHKEY.EXE, the "dynamic features controller", that is designed to run whenever Windows runs. The other program, DCSCPE.EXE, is the one you work with to actually set your settings and configure your configurations.

The only way to permanently disconnect InControl's Autostart feature is to remove DCSHKEY.EXE from the "load=" line of your Windows initialization file. Apparently, that is what happened in this case.

To reconnect InControl as a Windows autoloading program, edit the Windows initialization file, called WIN.INI (normally found in your Windows directory) using any plain text editor. After backing up WIN.INI, open the file and look for a line that starts with "load=". Immediately after the equal sign, insert DCSHKEY.EXE, then a space (only needed if there is anything else on the line). Then save the file. The next time you restart Windows, the InControl Tools icon will appear at startup and InControl will be fully functional.

An alternative method, if you use Program Manager as your Windows shell, is to add InControl Tools to your Startup group. For instructions on adding programs to Program Manager groups, see your Windows manual.

## Q:

**I'm having difficulty with adjusting the audio volume levels, mute controls or stereo controls in the Audio Panel of InControl Tools. What should I do?**

You should verify that you are running the latest MSMIXMGR.DLL for your audio board. The DLL (if present) should be located in your window's SYSTEM directory. You can check the date of the DLL by doing a DIR on the file. Contact your board manufacturer to verify that this is their latest DLL.

Additionally, you should verify that the 'drivers=' entry in the [boot] section of your SYSTEM.INI file specifies 'msmixmgr.dll'. Your drivers entry should be similiar to the following entry:

```
drivers=mmssystem.dll msmixmgr.dll.
```

You can examine your SYSTEM.INI file with NOTEPAD.EXE. You should search for the string 'msmixmgr'.

## Q:

**My display card supports InControl's Video ToolPanel features (the ToolPanel button is not grayed out) and I installed the runtime version of Video for Windows when I installed InControl**

**Tools. Everything was working well, but lately I have been having problems with the video features. What could have caused the change?**

The change was probably caused by the replacement of certain Video for Windows (VFW) files on your disk via the installation of games, multimedia graphics programs or the software accompanying a video capture card since you installed InControl Tools.

Some multimedia software titles will replace your VFW files with earlier versions of the files without letting you know about it. The solution: reinstall the runtime version of Video for Windows that came with your Diamond Multimedia Systems card. This version will run your video features and should be compatible with all other multimedia software you have added.



If you ever run into problems while using InControl Tools, the program provides for a way to produce a report that will be of enormous value to both you and to Technical Support when discussing and trying to resolve the problem.

The Problem Description Report (PDR) dialog appears when you press the Diamond Multimedia logo on the bottom right corner of any ToolPanel. When you complete the fields on the dialog's form and press Create Report, InControl automatically creates a document that contains information about your current system configuration and setup. The report is in ASCII text format and is placed in your Windows directory. Its name is DMSPDR.TXT.

**What to do with the PDR**

After generating the report, consult the [Diamond Technical Support contact list](#) and get in touch with us for assistance. If our Technical Support personnel cannot immediately solve your problem, they may request a copy of the PDR. The document can be mailed or transmitted in various forms to any of the postal or on-line service addresses shown in the [contact list](#).

The diagram below provides complete instructions for filling out and generating the PDR.





**Close:**

- [About button](#)
- [Actions](#)
- [Auto Repeat Checkbox](#)
- [Available Modes](#)
- [Bindings](#)
- [Brightness](#)
- [Browse button](#)
- [Cancel button](#)
- [Color channel](#)
- [Color Correction](#)
- [Color Depth](#)
- [Command buttons](#)
- [Command line](#)
- [Contrast](#)
- [Cursor color pad](#)
- [Cursor size selector](#)
- [DCI Enabled Checkbox](#)
- [Default button \(color correction\)](#)
- [Delay](#)
- [Desktop preview](#)
- [Desktop Size](#)
- [Desktop ToolPanel](#)
- [Disable Color Correction](#)
- [Display ToolPanel](#)
- [dpi](#)
- [DPMS](#)
- [Energy Star](#)
- [Frame Rate](#)
- [Frames Dropped](#)
- [Gamma curve viewer](#)
- [Gamma](#)
- [Help button](#)
- [Horizontal Synchronization](#)
- [Hot Keys ToolPanel](#)
- [Icon caption](#)
- [Logical dpi](#)
- [Modifiers](#)
- [Monitor Model list box](#)
- [OK button](#)
- [Option buttons](#)
- [Options \(screen saver\)](#)
- [PDR button](#)
- [Performance/Quality Selector](#)
- [Power Management ToolPanel](#)
- [Power Management](#)
- [Power-off Mode](#)

[Resource preview](#)  
[Screen saver](#)  
[Setup \(screen saver\)](#)  
[Suspend mode](#)  
[System cursor color](#)  
[System cursor size](#)  
[System resources](#)  
[Test \(custom modes\)](#)  
[Test \(screen saver\)](#)  
[Test Pattern](#)  
[Vertical Synchronization](#)  
[Video ToolPanel\\_88](#)  
[Video Viewer](#)  
[Viewport Size](#)  
[Your Monitor Modes](#)

8000 § 9416121217 § Copyright © 1994 Diamond Multimedia Systems, Inc.. All Rights Reserved.



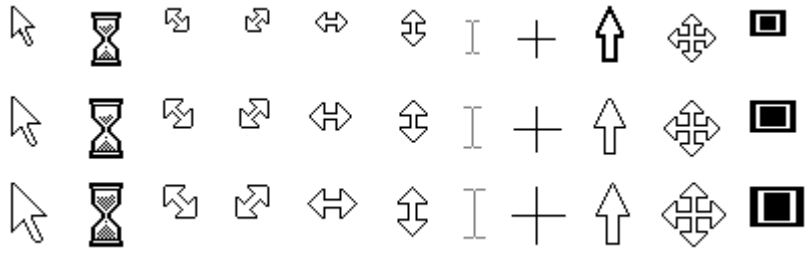
**Energy Star.** The system employed by InControl Tools to enable the power-saving features offered by quality monitors is fully compliant with the U.S. Environmental Protection Agency's (EPA) Energy Star standards. Energy Star specifications require a maximum output of no more than 30 watts when the monitor is in power-suspension (standby) mode.

80001

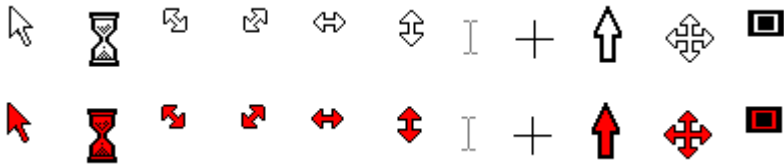
**Display Power Management System (DPMS).** Most quality monitors are now manufactured with Display Power Management System capabilities that allow them to automatically switch into low-power standby and total power-down modes after a certain interval of keyboard and mouse inactivity. As with screen savers, you can "reawaken" your monitor from an energy-saving slumber by moving the mouse or pressing a key.

80002

**System cursor sizes.** This chart shows the set of cursors (also known as mousepointers) that are made available to all applications by Windows. You can switch among the three sizes shown using the cursor size selection buttons in the Desktop ToolPanel.



**System cursor colors.** This chart shows the effect of a color change on the system cursors (also known as mousepointers). You can change cursor colors by choosing from the cursor color pad in the Desktop ToolPanel. Note: Not all display cards support cursor color switching. If yours does not support this feature, the color pad won't appear in the ToolPanel.



80019

**Desktop Preview.** A picture preview contained in the Display ToolPanel that illustrates the total expanse of your desktop (as specified by the current Desktop Size) in relation to the portion of the screen you can view at any one time (the Viewport Size).

81001

**Monitor Model list box.** A drop down list box at the top of the Display ToolPanel offers a number of popular standard monitor configurations as well as an option that allows you to define your own configuration. This is the first item to configure when you run InControl Tools for the first time.

81002

**Desktop Size.** Your "virtual" screen size. You can change Desktop Size in the Display ToolPanel or from the InControl Tools icon menu. If you change the Desktop Size to a higher resolution than your Viewport Size, you can create a virtual desktop that can as much as quadruple your usable work space. To move about your virtual desktop, move your cursor past the edges of your screen in any direction. Relative Viewport/Desktop sizes are displayed in the Desktop Preview area of the Display ToolPanel. **Note:** Some display cards do not support Viewport size changes, and thus do not support the creation of virtual desktops. When that condition exists, the Viewport Size list is disabled on the Display ToolPanel and all associated options--including Zoom options--are unavailable.

81003

**Viewport Size.** The actual screen resolution that you choose to work with. You can change Viewport Size in the Display ToolPanel or from the InControl Tools icon menu. If you want more screen at the same resolution, change the Desktop Size to a higher resolution than your Viewport Size. This creates a virtual desktop that can as much as quadruple your usable work space. To move about your virtual desktop, move your cursor past the edges of your screen in any direction. Relative Viewport/Desktop sizes are displayed in the Desktop Preview area of the Display ToolPanel. **Note:** Some display cards do not support Viewport size changes, and thus do not support the creation of virtual desktops. When that condition exists, the Viewport Size list is disabled on the Display ToolPanel and all associated options—including Zoom options—are unavailable.

81004



**Color Depth.** The maximum number of colors that can be displayed simultaneously. Higher color depths produce more accurate color representations and finer detail in high-color graphics, but lower depths mean faster graphics performance because there is less data to process. You can change your current color depth in the Display ToolPanel. Available depths range from 256 to 16.7 million colors.

81005

**Color Correction.** InControl Tools allows you to adjust your display's brightness, contrast and gamma (the latter of that allows adjustment for each of four color channels). To access the dialog for these adjustments, click the Color Correction button at the bottom of the Display ToolPanel. Note: Not all display cards support this feature. If your card does not, the Color Correction button is grayed out (disabled).

81006

**Available Modes.** A list of display modes in the User Defined Monitor Modes dialog. To create a custom monitor configuration, select modes from this list and add them to the dialog's second list (Your Monitor Modes).

81301

**Horizontal Synchronization.** A button in the User Defined Monitor Modes dialog that allows you to adjust horizontal synchronization for a monitor mode before selecting it from the Available Modes list.

81302

**Vertical Synchronization.** A button in the User Defined Monitor Modes dialog that allows you to adjust vertical synchronization for a monitor mode before selecting it from the Available Modes list.

81303

**Your Monitor Modes.** A list of display modes that you compile from the Available Modes list in the User Defined Monitor Modes dialog. The collection of selected modes defines your custom monitor configuration.

81304

**Add button.** Click to add the selected Available Mode to Your Monitor Modes list.  
81305

**Remove button.** Click to remove the selected mode from Your Monitor Modes list.  
81306



**Test button.** Button in the center of the User Defined Monitor Modes dialog that allows you to test the currently selected mode in the Your Monitor Modes list. The test provides an opportunity to center your display in the new mode while reviewing the look and performance of the mode.

81307

**OK button.** Closes the User Defined Monitor Modes dialog. Changes are stored and later enacted if you click OK from any ToolPanel. If you Cancel out of any ToolPanel, changes made in the User Defined dialog are abandoned.

81308

**Cancel button.** Closes the User Defined Monitor Modes dialog and abandons any changes made.

81309

**Test Pattern.** A picture preview of the effects of brightness, contrast and gamma adjustments that you make in the Color Correction dialog. Changes are also reflected in the overall display, but the test pattern allows you to measure the effects on a range of colors and shades simultaneously. You can change test patterns using the selection list above the pattern viewing area. Tip: Color Ramps with Dithering can be used to accurately measure the effects of all three forms of adjustment.

81501

**Test Pattern list box.** This drop down list box allows you to choose from among a number of test patterns with which to measure the effects of your brightness, contrast and gamma adjustments. Tip: Color Ramps with Dithering can be used to accurately measure the effects of all three forms of adjustment.

81502

**OK button.** Closes the Color Correction dialog. Changes are stored and later enacted if you click OK from any ToolPanel. If you Cancel out of any ToolPanel, changes made in the User Defined dialog are abandoned.

81503

**Close button.** Close the Color Correction dialog and abandon changes.  
81504

**Default button.** Color Correction dialog button that allows you to resets your display's brightness, contrast and gamma levels to their current hardware settings.

81505



**Help button.** Open InControl Tools Help, and show the Color Correction topic.  
81506

**Gamma Curve Viewer.** A Color Correction dialog feature that offers a dynamic graphic representation of the effects of adjustments you make to your display's brightness, contrast and gamma levels.

81507

**Color channel.** The current color for which gamma levels are being adjusted. You can adjust gamma (the ratio between light and dark tones) independently for red, blue and green channels, as well as for overall tones. A set of buttons in the Color Correction dialog allows you to select from among the four channels before making your adjustments with the gamma adjustment bar.

81508

**Gamma.** The contrast ratio between light and dark tones in your display. The Color Correction dialog, accessible from the Display ToolPanel, provides an adjustment bar with which you can increase or decrease your display's gamma level. You can even adjust gamma for separate color channels by choosing a color channel button before making your adjustments. Note: Not all display cards support color correction features. If your card does not provide such support, the Color Correction button on the Display ToolPanel is disabled.

81509

**Contrast.** The balance between light and dark tones in your picture. The Color Correction dialog, accessible from the Display ToolPanel, provides an adjustment bar with which you can increase or decrease your display's contrast level. Note: Not all display cards support color correction features. If your card does not provide such support, the Color Correction button on the Display ToolPanel is disabled.

81510

**Brightness.** The intensity of light emitted by your display. The Color Correction dialog, accessible from the Display ToolPanel, provides an adjustment bar with which you can increase or decrease your display's brightness level. Note: Not all display cards support color correction features. If your card does not provide such support, the Color Correction button on the Display ToolPanel is disabled.

81511

**Disable Color Correction.** A checkbox on the Color Correction dialog that shows the current on/off state of the Color Correction feature. Check the box to disable the feature and ignore any modifications made in the dialog. Clear the box to enable current color correction settings. Note: Not all display cards support color correction features. If your card does not provide such support, the Color Correction button on the Display ToolPanel is disabled.

81512

**Cursor color pad.** A set of 16 color buttons on the Desktop ToolPanel. Click a button on this color pad to select a new color for your cursor. Note: Cursor color changes aren't support by all display cards. If yours does not support this feature, the color pad won't appear in the dialog.

82001



**Cursor size selector.** A set of three buttons (each bearing a different-sized arrow graphic) in the Desktop ToolPanel. Click one of the raised buttons to change the size of your system cursors. Current size is indicated by the depressed button.

82002

**Resource preview.** A sample desktop window in the Desktop ToolPanel that illustrates the effects of resource size changes, icon caption changes, and adjustments to your display's logical dpi.

82003

**Icon caption.** The caption that appears beneath all icons in Windows--from those in the Control Panel and Program Manager to those that appear at the bottom of your screen when you minimize a window. The Desktop ToolPanel allows you to change the icon caption font, size and style.

82004

**Icon caption size.** Use this drop down list box to select a new size for all Windows icon captions.  
82005

**Icon caption style.** Use this drop down list box to select a new style for all Windows icon captions.  
82006

**System resources.** System fonts, title bars and title bar buttons such as minimize, maximize and system menu. The Desktop ToolPanel allows you to switch between two system resource sizes.

82007

**Vertical dpi.** Change this value to increase or decrease the height of resources (fonts, graphics, dialog boxes, etc.) that base their size on your display's logical dpi. Minimum is 96dpi, maximum is 150dpi. Use the arrow buttons beside the edit box to change the value in increments of one.

82008

**Horizontal dpi.** Change this value to increase or decrease the width of resources (fonts, graphics, dialog boxes, etc.) that base their size on your display's logical dpi. Minimum is 96dpi, maximum is 150dpi. Use the arrow buttons beside the edit box to change the value in increments of one.

82009



**Logical dpi (dots per inch)** is the number of pixels on a linear inch of display screen. VGA displays normally offer 96dpi, 8514-type displays have 120. InControl Tools allows you to change the logical dpi, and thus change the way text and graphics appear on the screen. Use the spin control at the bottom of the Desktop ToolPanel to simultaneously increase or decrease the height and width of resources (fonts, graphics, dialog boxes, etc.) that base their size on your display's logical dpi. Minimum is 96dpi, maximum is 150dpi. As you press on the arrows, the values in the Horizontal and Vertical edit boxes change accordingly.

82010

**Bindings.** Hot Keys ToolPanel list of all currently assigned Hot Keys, mouse button and combination key/mouse assignments. You can use these assignments to perform the listed tasks from anywhere in Windows as long as the Diamond InControl Tools icon appears on your desktop. If you close the program (from the icon's menu), these assignments are disabled. They're re-enabled when the program is started again.

83001

**Modifiers.** Shift, Ctrl and Alt keys, each of which is represented by three checkboxes in the Hot Keys ToolPanel. Click these checkboxes to include or exclude the Shift, Ctrl or Alt key modifiers as part of the Hot Key or mouse button assignment you are putting together. You can include all or any combination of the three modifiers in any assignment.

83002

**Function key/mouse button list.** A drop down list of keys (F1 through F12) and mouse buttons (left, right, middle) that you can use alone or in combination with Shift, Ctrl or Alt modifiers to create Hot Key assignments. After choosing your combination, bind it to an Action from the list below, then click the Add Hot Key button to create the assignment.

83003

**Actions.** A drop down list of InControl Tools functions that you can assign to the current key or mouse combination in the Hot Keys ToolPanel. Actions include Zoom In, Zoom Out, on-the-fly resolution switching, on/off switches for dynamic features, access to InControl's Popup Menu, and the launching of other Windows programs. After choosing an Action, you can bind it to the current key/mouse combination by clicking the Add Hot Key button.

83004

**Delete Hot Key.** Click this to delete the currently selected item from the Hot Key Bindings list at the top of the ToolPanel.

83005

**Add Hot Key.** Click this to delete the currently selected item from the Hot Key Bindings list at the top of the ToolPanel

83006

**Ignore Hot Keys checkbox.** If this box is checked, all Hot Key assignments are temporarily disabled. If the box is clear, all Hot Keys are available. You can toggle the status by clicking the box.

83007



**Disable Popup Menu checkbox.** If this box is checked, the InControl Popup Menu assignment (if such an assignment exists) is temporarily disabled. If the box is clear--and the popup menu appears on the bindings list--the menu is available for use from anywhere in Windows.

83008

**Audio Output Meters.** Provide a visual picture of the relative intensity of the output of the currently playing Wave or MIDI file. If the device is running in Stereo mode, both meters should be active; if the device is in Mono mode, only the left channel is metered.

84001

**Volume Slider Controls.** These slider-type controls let you adjust the volume (and balance, if the device is in Stereo mode) for Wave, MIDI or CD/Auxiliary port output. To adjust volume or balance for all devices simultaneously, use the Master controls.

84002

**Moving Both Stereo Slider Controls Simultaneously.** If an audio device is in Stereo mode, you can click and drag in the area between the two slider controls to provide even balance for device output. For evenly balanced output for all devices, click and drag between the two Master controls.

84003

**Mute Switches.** Use these checkboxes to silence (but not stop) output for a selected device. To silence all output simultaneously, use the Master mute box.

84004

**Stereo/Mono Mode Switches.** Choose either the Stereo or Mono radio buttons below the slider controls for a device to switch the device between stereo and mono output. To switch all devices to Stereo or Mono mode, use the radio buttons below the Master sliders.

84005

**Wave/MIDI Progress Indicator/Repositioning Button.** This button moves left to right along the bar at the bottom of the Audio ToolPanel when a Wave or MIDI file is loaded and playing. You can drag the button to a new position on the bar to reset playing position any time.

84006

**Wave/MIDI File Open.** If a file is not already loaded into the Audio ToolPanel, this button presents a one-item menu ("Open") that allows you to call a file search dialog box. You can use the dialog box to test or load a Wave or MIDI file into the ToolPanel for playing. If a file is already loaded into the ToolPanel, the menu is expanded to include Close, Copy and Command options. For more on these options, see [Opening and Playing a Wave or MIDI File](#).

84007



**Play Wave/MIDI File.** Plays the currently loaded Wave or MIDI file. If a file is not loaded, the button is grayed. While a file is playing, the button becomes a Stop button and can be used to freeze playing at a specific point in the file. To resume playing, click the Stop button a second time.

84008

**Audio Input Source Selectors.** To make adjustments for device connected to your sound card's Mic port, select the Mic radio button near the bottom of the ToolPanel. To adjust the output of a device connected to your Line port, select the Line radio button. In either case, you can use the Aux/CD slider controls to adjust volume and balance for the device.

84009

**Frame Rate.** The number of frames that a full-motion video sequence displays each second. In the Video ToolPanel, an indicator above the video playback window shows the frame rate for the currently-loaded file.

85001

**Dropped Frames.** Empty frames that are inserted into a full-motion video sequence at the time the sequence is created. Dropped frames occur when there is a discrepancy between the speed of the capturing system's hard disk and the video capture board used to collect the data. They do not normally affect synchronization or quality of the output. When a sequence completes playback, an indicator above the playback window shows the number of dropped frames that are contained in the currently-loaded file.

85002

**Video Playback Window.** The window in the center of the Video ToolPanel that serves as the screening area for a full-motion video file. The file may use all or only a portion of the window, depending on the dimensions of the captured sequence. Note: you can summon the Video Options menu by clicking your right mouse button anywhere on the playback window.

85003

**Optimization type selector.** A drop down listbox below the playback window in the Video ToolPanel that allows you to choose the form of optimization for video playback. Choices are Graphic Performance, Video Performance and Video Quality. The most appropriate optimization depends on several factors, including the quality of the video file and the settings that were used to create it. Note: This selector is not available to all display cards. If your card does not support video acceleration, both the Video Acceleration checkbox and the Optimization Type Selector are disabled and the optimization type defaults to Graphic Performance.

85004

**Auto Repeat selector.** A checkbox at the bottom of the Video ToolPanel that allows you to turn continuous-playback capability on or off. When on (if the box is checked), pressing the Play button causes the currently-loaded video file to repeat playback until you press the Stop button. Note: If you turn Auto Repeat off (remove the "X" from the checkbox) while a sequence is in continuous-playback mode, the sequence will still repeat until you stop it and start it again.

85005

**Video Acceleration Selector.** Checkbox at the bottom of the Video ToolPanel that allows you to turn video acceleration on or off. Note: This capability is not available to all display cards. If your card does not support video acceleration, both the checkbox and the Optimization Type Selector are disabled and the optimization type defaults to Graphic Performance.

85006



**Play/Stop button.** A button below the playback window on the Video ToolPanel that initiates playback of the currently-loaded file. If a file is not loaded, the button is disabled. To load a file, click the Show Video Options button and choose Open. While a sequence is being played, the Play button becomes the Stop button.

85007

**Show video options menu.** A button below the playback window on the Video ToolPanel that calls a menu to let you load a video file or set options for a running sequence. If a file is not already loaded into the ToolPanel, only the Open item appears when you click the button. If a file is loaded, the entire options menu is available. For a picture of the menu and details about each of its functions, see [Video Playback Adjustments](#). Note: you can also call the menu by clicking your right mousebutton anywhere on the playback window or on the playback progress indicator.

85008

**Playback progress indicator.** A bar below the playback window on the Video ToolPanel that displays the progress of a currently-running full-motion video sequence. As the sequence is played, a button moves across the bar. If the Auto Repeat checkbox is checked, the indicator moves from the end to the beginning of the bar on each replay loop. Note: you can "freeze" a running sequence and scan forward and backward through the sequence's frames by clicking and holding down your left mouse button on the indicator bar's button. Another "hidden" feature: click your right mouse button on the progress indicator to call the Video Options menu.

85009

**Accelerated video indicator.** An indicator at the top of the Video ToolPanel to let you know that Video Acceleration is enabled. The feature can be turned on or off via the checkbox at the bottom of the ToolPanel. Note: This capability is not available to all display cards. If your card does not support video acceleration, the indicator line does not appear and both the checkbox and the Optimization Type Selector are disabled.

85010

**View.** A Video Options menu item. Allows you to change the size of the video picture. Choices are Half-Size, Normal Size (the default) and Double. Note: When the picture is doubled, it may be clipped to fit into the maximum size of the video playback window.

85020

**Volume.** A Video Options menu item. Allows you to adjust the volume of the audio portion (if any) of the currently-loaded \*.AVI file. Move the volume slider upward to increase volume, downward to decrease volume.

85021

**Speed.** A Video Options menu item. Allows you to adjust the frame rate (number of frames per second) of the currently-loaded \*.AVI file. Default rate is 100, that matches the rate at which the sequence was originally captured. To increase playback speed, move the speed slider upward. To slow a sequence, move the slider downward. As speed is increased or decreased, the changed frame rate is reflected in the Frame Rate indicator above the playback window.

85022

**Open.** A Video Options menu item. Calls a standard file search dialog that you use to locate an \*.AVI file for loading into the ToolPanel.

85023



**Close.** A Video Options menu item. Closes the currently-loaded file and clears the playback window.  
85024

**Copy.** A Video Options menu item. Allows you to copy the current frame from the video playback window to Windows' clipboard for pasting into other applications.

85025

**Configure.** A Video Options menu item. Calls a dialog box that allows you to set the Video Mode, choose Zoom-by-2 (equivalent to choosing Double from the View menu item) and enable a Skip Frames If Behind feature for the currently-loaded sequence. The dialog also allows you to retain these configuration items (Set Default) for files that you load in future sessions in the Video ToolPanel.

85026

**Command.** A Video Options menu item. Calls a dialog box that allows you to issue MCI commands to the currently-loaded file. Knowledge of the Windows MCI API is needed to use this feature. Note: All functions that can be applied here are available elsewhere in the options menu and in the ToolPanel.

85027

**Test (screen saver).** A Power Management ToolPanel button to allow you to test the currently selected screen saver. To end the test, move your mouse or touch a key.

86001

**Setup (screen saver).** Most Windows screen savers offer a variety of options--from graphics speed settings to password locking--that you can configure from a custom setup dialog. These dialogs are built in to the individual screen saver program, and thus differ widely in the extent and presentation of options. If the currently selected screen saver includes an options dialog, you can access it by clicking the Setup button in the Power Management ToolPanel.

86002

**Screen saver.** A screen saver is a moving graphic or bitmap that appears on your display after a certain interval of keyboard and mouse inactivity has elapsed. A dropdown list box at the top of the Power Management ToolPanel allows you to select a screen saver. If your system

86003

**Delay Before Screen Saver.** The interval of keyboard and mouse inactivity, in minutes, before your screen saver switches on. If your screen saver assignment is "None" (see the Screen Saver list at the top of the ToolPanel), the setting has no effect. If a screen saver is assigned, you can disable it by changing this setting to zero. Clicking the arrows beside the edit box increases or decreases the setting in one-minute intervals. If your hardware has power-saving capabilities and those capabilities are enabled, your screen saver setting must be less than your suspension-mode delay setting.

86004



**Delay Before Suspend Mode.** The interval of keyboard and mouse inactivity, in minutes, before your monitor uses its power-saving features to automatically switch to level 1 ("power suspend") mode. As with a screen saver, the display can be restored from its low-power "standby" state by moving the mouse or pressing a key. Display Power Management System (DPMS) capabilities are required to use this feature. Check your monitor and display card specifications for compliance information. If your system uses DPMS, and Power Management is enabled (if the checkbox at the bottom of the ToolPanel is clear), you can type a value into this edit box or click the arrows beside the box to increase the delay in one-minute intervals. Note: The power-suspension delay must be less than the power-off (level 2) delay.

86005

**Delay Before Power Off Mode.** The interval of keyboard and mouse inactivity, in minutes, before your monitor uses its power-saving features to automatically switch to level 2 ("power off") mode. As with a screen saver, the display can be restored from its "off" state by moving the mouse or pressing a key. Display Power Management System (DPMS) capabilities are required to use this feature. Check your monitor and display card specifications for compliance information. If your system uses DPMS, and Power Management is enabled (if the checkbox at the bottom of the ToolPanel is clear), you can type a value into this edit box or click the arrows beside the box to increase the delay in one-minute intervals. Note: The power-off (level 2) delay must be greater than the power-suspension (level 1 or standby) delay.

86006

**Delay settings.** InControl Tools allows you to separately enter delays (intervals of mouse and keyboard inactivity) for your screen saver and for two levels of power-saving functions (if supported by your display hardware). A bar graph illustrating the current delay settings appears in the Power Management ToolPanel.

86007

**Power Management.** InControl Tools' supports the power-saving capabilities of many monitors by allowing you to set power-suspension (level 1 or standby) and power-off (level 2) delays. You can also disable power-saving features by checking the Disable Power Management box at the bottom of the Power Management ToolPanel. Note: Switching off power management does not effect screen saver settings.

86008

**Command Line.** An edit box in the Run dialog box, that is accessed by choosing Run Application as an Action in the Hot Keys ToolPanel. Use the command line to type a program file name, including path and any needed switches, for an application that you want to bind to the currently selected Hot Keys or mouse button in the Hot Keys ToolPanel.

86301

**Help button.** Open InControl Tools Help and show the Run dialog topic.  
86302

**Browse button.** A button in the Run dialog box, that is accessed by choosing Run Application as an Action in the Hot Keys ToolPanel. Use the Browse button to call a standard file search dialog for help in finding the application that you want to bind to the currently selected Hot Keys or mouse button in the Hot Keys ToolPanel.

86303

**Cancel button.** Close the Run dialog and abandon changes.  
86304



**OK button.** Close the Run dialog and associate the command (if entered) to Hot Key  
86305

All information about how to use this dialog is in the diagram and in the topic text. For Diamond Multimedia Technical Support Service contacts and addresses, including online services, see [How to Contact Us](#).

87000

**Option buttons.** A set of six buttons that appears on the left side of all ToolPanels. Use these buttons to quickly switch among ToolPanels.

88001

**Display ToolPanel.** The Display ToolPanel allows you to fine-tune your display for maximum performance and productivity. Use this ToolPanel to select a standard monitor mode, create a list of custom monitor modes, choose Desktop and Viewport sizes from among those available to your monitor, set up a virtual desktop, select a color depth, and adjust color settings for your display. It can be accessed by clicking the Display button on the left side of any ToolPanel.

88002

**Desktop ToolPanel.** The Desktop ToolPanel allows you to make adjustments to icon captions and other Windows resources. Such changes may be required after switching screen sizes in order to provide a more aesthetically pleasing or practical match of resources and resolution. It can be accessed by clicking the Desktop button on the left side of any ToolPanel.

88003

**Hot Keys ToolPanel.** The Hot Keys ToolPanel allows you to dedicate up to 16 keyboard combinations, mouse button or keyboard/button assignments for easy program-launching and quick access to InControl Tools features and other Windows tasks.

88004

**Audio ToolPanel.** This feature is not yet implemented.  
88005

**Video ToolPanel.** The Video ToolPanel provides a testing board for the playback of full-motion video files. Choose an \*.AVI file, click the play button and fine-tune the playback for peak performance and quality.

88006



**Power Management ToolPanel.** The Power Management ToolPanel allows you to manage your monitor's power-saving features and provides an easy way to coordinate these features with your Windows screen savers. It can be accessed by clicking the Power button on the left side of any ToolPanel.

88007

**Command buttons.** A set of four buttons that appear on the right side of all ToolPanels. Except for the Help button, that opens the main Help topic for the current ToolPanel, the buttons perform the same functions for all ToolPanels. (See OK, Cancel and About in the [glossary](#).)

88008

**OK button.** OK buttons appear on all ToolPanels and dialogs, though there is a distinction. Clicking OK in a dialog dismisses the dialog and stores any changes you made in it. Those changes aren't enabled, however, until you click OK from a ToolPanel. When you do that, you enact all changes made in all ToolPanels and dialogs and dismiss InControl's main configuration window. If you Cancel out of any ToolPanel, any changes in dialogs are abandoned (even if you OK'd out of the dialog) along with any changes made in any other ToolPanel.

88009

**Cancel button.** Cancel buttons appear on all ToolPanels and dialogs, though there is a distinction. Canceling out of a dialog abandons all changes made in the dialog and closes it to return you to the ToolPanel from which the dialog was opened. Clicking Cancel on a ToolPanel has a more powerful effect: it abandons all changes made in all dialogs and ToolPanels and dismisses the InControl Tools Configuration main window.

88010

**Help button.** Help buttons appear on all ToolPanels and dialogs to provide context-sensitive assistance for the current set of tools and controls.

88011

**About button.** One of four command buttons that appear on all ToolPanels. About calls a dialog box that displays the version numbers for your Diamond display driver and your InControl Tools software.

88012

**PDR button.** The Diamond logo on the bottom right corner of all ToolPanels also serves as the entry point to the Problem Report dialog. When you fill in the form contained in the dialog and click its Create button, a detailed report of your current system information is created in your Windows directory. If you are experiencing a problem, you can send this document to Diamond Technical Support (see [How to Contact Us](#)) to provide the support staff with information that can lead to a speedier resolution of the difficulty.

88013

**This feature is not yet implemented.**



**Only the left button works in this illustration, but you get the idea...**

While working in an InControl Tools panel or dialog, you will need to click your **right** mouse button to get the PopHelp "stickie" note.

**Tip: Do not click OK until you are through making changes.**

OK tells InControl that you want to enact **all** of your changes **now**. If you have other changes to make (including changing your mind), you will have to reopen InControl to make them.

**Tip: Viewing diagrams.**

In the Options button chart, click a button to display a diagram of the ToolPanel in a popup window. To display the diagram in its own topic window (for printing, annotating or keeping on your desktop as a reference page), click the hotspot in the description. To return to this topic after reviewing a diagram in a topic window, click the Back button.

**Diamond:** Light, life, the sun, durability, incorruptibility, invincible constancy, sincerity, innocence.  
-- J.C. Cooper, "An Illustrated Encyclopedia of Traditional Symbols"

Switches your Viewport to the next lower resolution. For example, if your Desktop Size is 1280 X 1024 and your Viewport Size is currently 800 X 600, Zoom In switches your Viewport to 640 X 480. For more on virtual desktop configuration, see [Configuring Your Display](#) and [Assembling a Custom Display List](#).

**Note:** Some display cards do not support Viewport size changes, and thus do not support the creation of virtual desktops. When that condition exists, the Viewport Size list is disabled on the Display ToolPanel and all associated options--including Zoom options--are unavailable.

Switches your Viewport to the next higher resolution. For example, if your Desktop Size is 1280 X 1024 and your Viewport Size is currently 800 X 600, Zoom Out switches your Viewport to 1024 X 768. Zoom Out limit is your current Desktop size. For more on virtual desktop configuration, see [Configuring Your Display](#) and [Assembling a Custom Display List](#). **Note:** Some display cards do not support Viewport size changes, and thus do not support the creation of virtual desktops. When that condition exists, the Viewport Size list is disabled on the Display ToolPanel and all associated options—including Zoom options—are unavailable.

2048 × 1536
1024 × 3072
2048 × 768
1600 × 1200
1024 × 1536
1280 × 1024
1152 × 864
✓ 1024 × 768
800 × 600
640 × 480

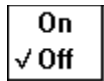
Switch to a different Desktop Size. This is your "virtual desktop," that can provide you with an active, "usable" surface that is as much as four times the size of your Viewport Size (the portion of the screen you can actually see at any one time). The additional space is visible when you pan the desktop by moving your mouse past the edges of your screen. **Note:** Some display cards do not support Viewport size changes, and thus do not support the creation of virtual desktops. When that condition exists, the Viewport Size list is disabled on the Display ToolPanel and all associated options--including Zoom options--are unavailable.

✓ 1024 × 768
800 × 600
640 × 480

Select a different Viewport Size. This sets the actual resolution and refresh rate for your display. **Note:** Some display cards do not support Viewport size changes, and thus do not support the creation of virtual desktops. When that condition exists, the Viewport Size list is disabled on the Display ToolPanel and all associated options--including Zoom options--are unavailable.

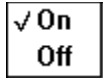
9904





**Pan Lock on/off switch.** Normally, you can pan to other areas of your virtual desktop by moving your mouse past the edges of your screen. This switch allows you to turn on a Pan Lock that freezes the screen at its current position. To restore panning capabilities, turn the lock Off. **Note:** Not all display cards support Pan Locking.

9905



**Color Correction on/off switch.** Default state is On, which applies any color corrections you may have made in the Color Correction dialog. If you want to temporarily ignore color corrections and revert to your display's defaults, click the feature Off. **Note:** Not all display cards support Color Correction features.

9906

◆ **Turn Fast Scrolling Off** when you want to slow down the rate at which your display scrolls data. To restore the default scrolling rate, switch it On again. **Note:** Not all display cards allow you to switch off this feature.

9907

◆ **Switches Hot Key access on or off.** You may want to turn the assignments off when using applications that offer shortcut keys whose bindings conflict with your Hot Key assignments.

9908

◆ **Switches the InControl Tools Popup Menu on or off.** You may want to switch the menu off when using applications that also offer popup menu capability or when the popup menu's Hot Key assignment conflicts with one in use by a currently running application.

9909

Dismisses the InControl Popup Menu. **Note:** Clicking Close on the InControl Popup Menu does not close InControl Tools; the only way to close the program is to choose Close from the desktop icon menu.

9910

InControl Tools is always accessible from a desktop icon. To call the main window, click the icon and choose Restore, or double-click the icon.

9950

InControl Tool's main window can also be called by double-clicking the Diamond icon in Windows' Control Panel.

9951



Opens InControl Tools' main window to the ToolPanel you were last working in. If you are running the program for the first time, the Display ToolPanel appears.

9911

Click this item and use your arrow keys to move the icon to a different location on your desktop. Normally, you can simply drag the icon to a new location; Move allows you to accomplish the same result using the keyboard.

9912

InControl Tools' icon cannot be resized (nor can its main window).  
9913

While in its iconized form, InControl Tools cannot be minimized. When you are working in the main window, however, clicking OK or Cancel dismisses the main window and effectively places InControl back into its iconized "standby" state.

9914

Opens InControl Tools' main window to the ToolPanel you were last working in. If you are running the program for the first time, the Display ToolPanel appears. (**Note:** Maximized windows normally cover the entire screen, but InControl Tools is prevented from assuming such as state and displays normally.)

9915

Closes InControl Tools. This action disables Hot Keys, screen-switching and other dynamic features of InControl. All features are restored when InControl's executable file (DCSKEY.EXE) is reopened or when Windows is restarted.

9916

Calls Windows' Task Manager (or replacement task-switching utility) to let you switch to another currently running application.

9917

Dismisses the main window and enacts all changes made in all ToolPanels and dialogs during this session of InControl Tools.

9918



Abandons all changes made in all ToolPanels and dialogs during this session of InControl Tools and dismisses the main window.

9919

Opens InControl Tools Help (this file) and shows the main topic for the current ToolPanel.  
9920

Displays the InControl Tools About box, that contains version information about the program.  
9921

When you click the Run Application item, a Run dialog box appears. Use the dialog to specify the path, filename and any needed parameters for the program you want to bind to the selected key combination or mouse button.

9922

Assigns the selected key combination or mouse button to the task of summoning the InControl Popup Menu.

9923



Normally, when you click the Maximize button (the upward-pointing arrow in the top right corner of a window) or choose the Maximize from a window's system menu, the window fills your entire visible screen surface. InControl Tools gives you the choice of maintaining this standard behavior or, if you are using a virtual desktop, to maximize the window to fill the entire virtual screen instead. If assigned to a Hot Key, Maximize To appears on both the desktop icon menu and InControl's popup menu (that also needs a Hot Key assignment). From either menu, you can choose to Maximize To the Desktop (the larger virtual screen) or to the Viewport (the screen surface you can see at any one time). **Note:** Some display cards do not support Viewport size changes, and thus do not support the creation of virtual desktops. When that condition exists, the Viewport Size list is disabled on the Display ToolPanel and all associated options—including Maximize To—are unavailable.

9924

◆ Normally, most Windows dialog boxes are centered on your visible screen surface (the Viewport). If, however, you are using a virtual desktop, you may want to center dialogs relative to the entire virtual screen. If assigned to a Hot Key, Center To appears on both the desktop icon menu and InControl's popup menu (that also needs a Hot Key assignment). From either menu, you can choose to center your dialogs relative to the Desktop (the larger virtual screen) or to the Viewport (the screen surface you can see at any one time). **Note:** Some display cards do not support Viewport size changes, and thus do not support the creation of virtual desktops. When that condition exists, the Viewport Size list is disabled on the Display ToolPanel and all associated options--including Center To--are unavailable.

9925

**Application Associations List Switch/Editor.** This feature, available only from the Popup Menu, allows you to assign the current desktop settings to a currently running application, thereafter providing automatic desktop reconfiguration every time the associated application is run. For details on this feature, see [Assigning a Desktop Configuration to an Application.](#)

9926



**Master Audio Volume Control.** Allows you to adjust the overall volume for all audio devices attached to your system without the need to access the [Audio ToolPanel](#). To use the control, drag the button up the scale to increase volume and down to lower volume. The new setting will be reflected in the Master volume control in the Audio ToolPanel (likewise, if you change the Master control in the ToolPanel, the new setting will be reflected in the popup control).

9927

**Always on Top.** When this switch is clicked on (a checkmark appears beside the menu item), the InControl Desktop icon always appears on top of other windows.

9928

◆ **Screen Saver switch.** Allows you to turn your screen saver on or off from the desktop or from the popup menu. This switch is effective only if you have a screen saver selected in the Power Management ToolPanel.

9929

**Color switch.** Allows you to switch your screen color resolution directly from the Popup Menu. Click the item, then choose from the submenu. Choices are limited to those available to the monitor selected in the Display ToolPanel.

9930

